

# Institute for Health Equity and Social Justice Research

OCTOBER 2024 NEWSLETTER

## Upcoming Events

### WORKS IN PROGRESS

*Thursday, October 10th from 12pm-1pm*

We are excited to announce our second Works in Progress event of the semester!

Our Works in Progress series provides an opportunity for the IHESJR community to learn about our colleagues' work focused on health equity and to engage in discussion and provide feedback.

This month, we will be joined by two faculty scholars, **Dani Snyder-Young** and **Herman Saksono**. Dr. Snyder-Young will be discussing her work titled *"Stigma, performance, and the manipulation of social norms: behavior change in health equity & cultural studies contexts."* Dr. Saksono will also be presenting his research, titled *"Socio-cognitive Framework for Personal Health Informatics and Health Equity."*

This event will be hybrid - we invite you to join us in-person in INVO-308 or virtually via Zoom. A flyer will be sent out shortly.

Click [here](#) to join the session virtually.



### VIRTUAL MOCK PRESENTATION SESSION

*Friday, October 18th from 10am-12pm*

The session will give presenters an opportunity to practice their oral and poster presentations and get valuable feedback from our community of faculty, staff and students ahead of upcoming conferences.

Click [HERE](#) to attend the session via Zoom!

## HOT TOPICS IN PUBLIC HEALTH SEMINAR

Friday, October 25th from 12:00pm-1:00pm

IHESJR is co-sponsoring a Hot Topics in Public Health Seminar with acclaimed physician and sociologist Dr. Jonathan Metzl. The talk, titled "*What We've Become: Living and Dying in a Country of Arms*", is co-sponsored by the Burnes Center for Social Change, the Department of Health Sciences, and Bouvé Diversity, Equity, and Inclusion.

Visit [this link](#) to learn more about Dr. Metzl and his work.

Visit [this link](#) to register for the event via Zoom.

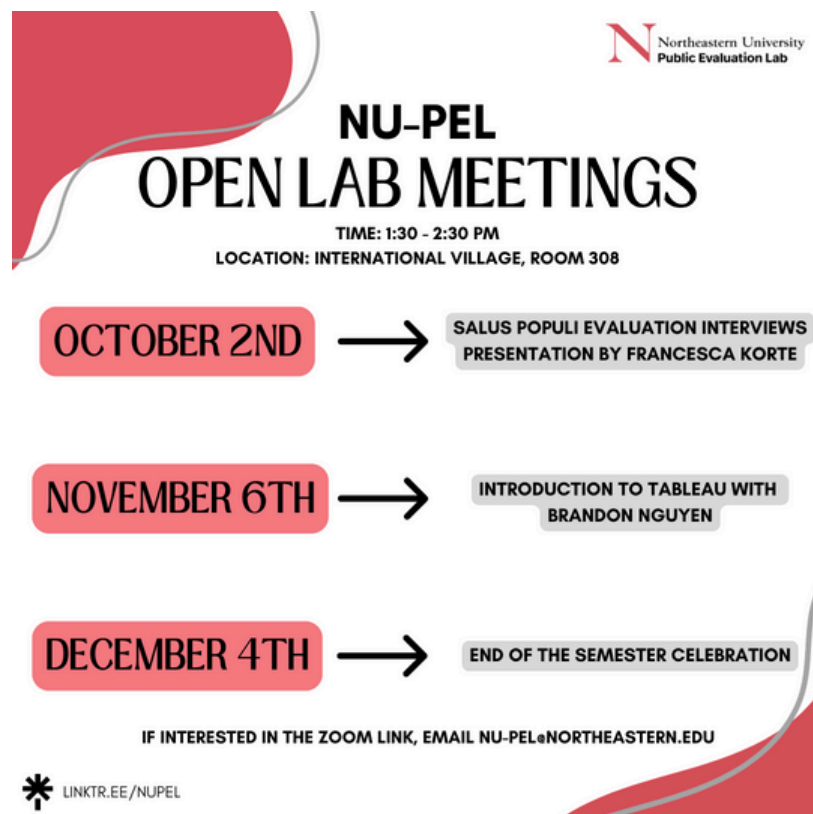
---

## NU-PEL OPEN LAB MEETINGS

See Dates in the Flyer Below

Northeastern University Public Evaluation Lab (NU-PEL), an affiliate lab of IHESJR and the Center for Crime, Race, and Justice, will be hosting monthly open lab meetings this semester. All community members are welcome to come to learn about the lab and its current work. The meetings will feature project presentations and provide time to connect with evaluators and explore different research opportunities!

Please see the flyer below for meeting dates and topics and reach out to Katherine Hazen (k.hazen@northeastern.edu) or Tiffany Hidalgo (hidalgo.t@northeastern.edu) with any questions.



The flyer features a red abstract shape on the left and right sides. At the top right is the Northeastern University Public Evaluation Lab logo. The main title is 'NU-PEL OPEN LAB MEETINGS' in large, bold, black letters. Below the title, the time 'TIME: 1:30 - 2:30 PM' and location 'LOCATION: INTERNATIONAL VILLAGE, ROOM 308' are listed. Three meeting dates are listed in red rounded rectangles, each followed by an arrow pointing to a grey rounded rectangle containing the meeting topic. At the bottom, there is a line of text for Zoom link inquiries and a small asterisk logo with the URL 'LINKTR.EE/NUPEL'.

Northeastern University  
Public Evaluation Lab

### NU-PEL OPEN LAB MEETINGS

TIME: 1:30 - 2:30 PM  
LOCATION: INTERNATIONAL VILLAGE, ROOM 308

**OCTOBER 2ND** → SALUS POPULI EVALUATION INTERVIEWS  
PRESENTATION BY FRANCESCA KORTE

**NOVEMBER 6TH** → INTRODUCTION TO TABLEAU WITH  
BRANDON NGUYEN

**DECEMBER 4TH** → END OF THE SEMESTER CELEBRATION

IF INTERESTED IN THE ZOOM LINK, EMAIL NU-PEL@NORTHEASTERN.EDU

\* LINKTR.EE/NUPEL

# Institute News and Updates

---

Second year Population Health PhD student **Salome Goglichidze** presented research titled "*Sanctuary Policies and Type 2 Diabetes Medication Prescription Trends Among Community Health Center Patients*" on September 12th for the "Immigrant Health in a US Context" session at the Interdisciplinary Association for Population Health Science (IAPHS) 2024 conference in St. Louis, MO (September 10-13, 2024).

The aim of the study was to compare type 2 diabetes medication prescription trends in different county-level sanctuary policy environments among patients with type 2 diabetes seen at clinics within a multistate network of community health centers.

The PI of the study is IHESJR Faculty Scholar **Danielle Crookes**, who is also a co-author, along with Wanjiang Wang and Louisa H. Smith (Northeastern University). Other co-authors of the research -- David Ezekiel-Herrera, John D. Heintzman, Miguel Marino, and Jennifer A. Lucas -- are from Oregon Health and Science University (OHSU).

---

IHESJR Faculty Scholar **Danielle Crookes** was recently awarded a 5-year NIH K01 career development grant from the National Heart, Lung, and Blood Institute. This project, entitled "*Understanding immigrants' cardiovascular disease utilization: An epidemiological and system dynamics approach*", will use epidemiologic, system dynamics, and community-engaged methods to understand how individual and multiple components of the sociopolitical environment affect Black and Latinx immigrants' CVD preventive care utilization. Additional information about the project can be found on [NIH Reporter](#).

---

A research team including IHESJR Faculty Scholars **Tamara Jimah** and **Analia Albuja**, along with IHESJR Associate Director **Idia Thurston**, received a small Grant-in-Aid (\$2000) for a project titled, "*Using AI to identify protective factors for immigrant youth health & wellbeing*" from the Society for the Psychological Study of Social Issues.

This mixed methods study will use a strengths-based approach to understand how healthy functioning and well-being develop in children born to African mothers in the United States.

The research team also includes Northeastern professors Briana Taylor and Silvio Amir.

We're thrilled to announce that the Institute for Health Equity and Social Justice Research is now on Instagram, Facebook, and LinkedIn!

Join us to:

- Stay informed about our institute's activities and initiatives
- Engage with our community and share your thoughts and experiences
- Connect with fellow members, staff, and students who are passionate about health equity and social justice

Visit us on the platforms below:

Instagram: [@nuihesjr](#)

Facebook: [Institute for Health Equity and Social Justice Research](#)

LinkedIn: [Institute for Health Equity and Social Justice Research](#)

## Recent Publications

---

IHESJR Associate Director **Idia Thurston** had a letter to the editor published by the Boston Globe [here](#). This is a part of the larger IDEAS (Increasing Diversity, Equity, and Inclusion in the Academic Health Sciences) study that identified thirteen evidence-based strategies for improving racial and ethnic equity in graduate-level health programs.


Click [HERE](#) to read more about the project and its findings.

---

Former Institute SGA and Population Health PhD student **Samantha Meeker** recently had a paper published in the *Stress and Health Journal*.

The paper, titled "*Vicarious Trauma and the COVID-19 Pandemic: The Role of Organizations*" details findings that indicate that four out of five organizational pillars (Leadership and Mission, Employee Empowerment and Work Environment, Training and Professional Development, and Staff Health and Wellness) are positively associated with staff ratings of responsiveness to COVID-19. This suggests that organizations proactive in addressing vicarious trauma (VT) can enhance employee perceptions during crises like COVID-19. By reducing the impacts of VT, these organizations help employees manage crises more effectively, leading to more favorable views of the organization's overall responsiveness. This underscores the critical role of organizational health in supporting employee well-being and effective crisis management.

Please visit [this link](#) to read the article.



# Fall 2024 Peak Awardees

---

Project-Based Exploration for the Advancement of Knowledge (PEAK) Awards are an opportunity for undergraduate researchers to gain new experiences in research and work with a mentor to advance their goals and projects.

We want to congratulate all the IHESJR affiliated undergraduate students who received PEAK awards this fall!

## ASCENT AWARDS

### **Noah Brenman, Bouvé '27**

Alzheimer's Disease and Disparity: A Rural Undercounting  
*Mentor: Nasim Ferdows, Bouvé, Health Sciences*

### **Vivian Lin, COS '26**

Covid-19's Impact on Stroke Mortality Rates in Rural vs Urban Areas  
*Mentor: Nasim Ferdows, Bouvé, Public Policy and Urban Affairs*

### **Ria Mukhopadhyay, Bouvé '25**

Salus Populi Evaluation  
*Mentor: Katherine Hazen, CSSH, Criminology & Criminal Justice*

### **Joud Rai, COS '27**

Judicial Training Program Survey Development and Management  
*Mentor: Katherine Hazen, CSSH, Criminology & Criminal Justice*

### **John Signorile, Bouvé '26**

Early Childhood Mental Health Families Independence, Resilience, and Training (ECMH FIRST)  
*Mentor: Beth Molnar, Bouvé, Health Sciences*

### **Chloe Strawn, Bouvé '26**

Adaptive Sport Involvement by Adults with Disabilities: Experiences, Fitness, and Health Outcomes  
*Mentor: Lorna Hayward, Bouvé, Physical Therapy, Movement, and Rehabilitation Science*

### **Samadhi Wijethunga, COS '25**

Synuclein-Based Isolation of Pathological Human Neurons for Single Cell Analysis  
*Mentor: Dami Ko, Bouvé, Nursing*

## SUMMIT AWARDS

### **Rohan Chopra, Khoury '26**

Building an LLM-Driven Chatbot to Support and Empower Transgender Individuals Facing IPV  
*Mentor: Winston Kennedy, Bouvé, Physical Therapy, Movement, and Rehabilitation Science*

### **Emily Wu, Bouvé '25**

Fostering Community-Engagement in Operationalizing Climate Gentrification  
*Mentor: Patrice Williams, CSSH, Public Policy and Urban Affairs*

\*Emily Wu was also awarded the PEAK Ascent Award in the summer, but was not mentioned in our August Newsletter\*

## SHOUT IT OUT AWARDS

### **Laila Harruna & Anthony Trinidad**

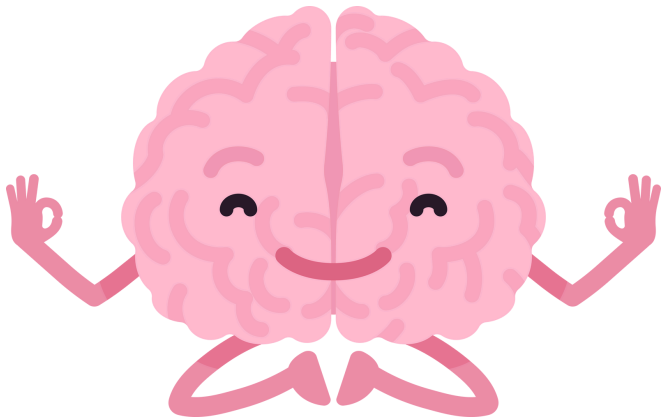
An Examination of Multi-Level Predictors of Youth Social Competence

[Click here](#) for the Undergraduate Research and Fellowships' news article featuring all the awardees and their project details!

Base Camp Awards are submitted on October 17th and will be highlighted in a future newsletter.

# Self-Care Spotlight

♥ A resource to consider using to center your wellbeing and care for yourself. ♥



**ATTENTION FACULTY AND STAFF!**  
Northeastern University ADVANCE Office of Faculty Development is hosting a workshop titled *Mental Health Matters: Shape Your Daily Work to Benefit Your Mental Health*. The event, hosted by psychologist and former clinical researcher-turned-author Dr. Alice Boyes, will take place virtually on Tuesday, October 29th from 10am-11:30am. Click [HERE](#) to learn more and to register for the workshop.



The Center for Spirituality, Dialogue, and Service hosts daily meditation sessions on weekdays from 12pm-12:30pm in 200 Ell Hall. The sessions are open to all - no experience or registration necessary. Click [HERE](#) to learn about CSDS and its programming.

# Opportunities

## ATTENTION GRAD STUDENTS AND HEALTH EQUITY INTERNS!

There is an exciting HIV and implementation science research training opportunity for undergraduate and graduate students at Northeastern University.

STAR (Stimulating Training and Access to HIV Research Experiences) is an innovative program that provides experiential learning opportunities for Global Majority students and researchers (people who identify as Black, Indigenous, Latine, Asian, Brown, and/or dual- or multi-heritage individuals) to a capacity building training program. This includes an opportunity to join a participatory designathon weekend in February, a six-week hybrid (one week in-person, five weeks online) summer opportunity, and a year-long dedicated mentorship program.

The STAR program provides an opportunity for participants to do the following:

- lead and develop a local research project on HIV in collaboration with a community partner
- build professional networking, and hone leadership and implementation science research skills
- obtain tailored mentorship from experts in the field at Northeastern University
- build a network of peers and scholars across disciplines and four other institutions
- receive a \$3,000 stipend per trainee
- become the next generation of leaders in HIV research

The application submission deadline is **October 31, 2024, by 11:59 PM CT**. Check out the application link [here](#). Please see the flyer on the next page for more information.



Application Webinar

**STAR Scholars Program 2025-2026**

Virtual webinar for application

Learn more about the STAR scholars program and a detailed breakdown of the application

 Date  
**Monday, October 7th**

Time  
**12:00 PM CST**

[Sign Up](#)



Visit [www.star4ph.org](http://www.star4ph.org) to learn more







**STAR**  
Stimulating Training & Access  
to HIV Research Experiences

2025-2026

## SCHOLARS PROGRAM

*Apply Now!*

**\$3,000  
SUMMER  
STIPEND**



Immerse yourself in **hands-on experience** in a variety of HIV community-based and implementation research

Establish a **strong** and **sustainable** community of established and **interdisciplinary** HIV researchers across the country

Develop and **strengthen skills** in research methods, grant writing, crowdsourcing, CBPR, and more

**APPLY NOW &  
JOIN STAR!**

**DEADLINE: OCTOBER 31, 2024**



[WWW.STAR4PH.ORG](http://WWW.STAR4PH.ORG)



**CONTACT US**

[info@star4ph.org](mailto:info@star4ph.org)