

Institute for Health Equity and Social Justice Research

Biannual Report 2020-2022

Message from the Director

I am excited to share with you the 2020-2022 Institute for Health Equity and Social Justice Research Report. This Report highlights the many ways that our Faculty Scholars, Health Equity Interns, graduate students, and staff have worked with multiple communities during the past two academic years engaging in research to further the goals of health equity and social justice. Never has the need for a critical examination of our public health efforts nor the opportunities to strengthen our efforts to promote health equity and social justice been greater. Increasingly public health and sociological scholars are describing this moment as a syndemic – a term coined by anthropologist Merril Singer and defined by the CDC as a time of “synergistically interacting epidemics”. While the COVID-19 pandemic has revealed the inadequacies of our existing public health systems, the stark racial disparities in coronavirus cases, mortality, and social and economic impacts of the pandemic reflect the persistence of structural racism. We continue to reckon with the persistence of racially motivated police brutality, a critical public health issue; and we struggle to address the epidemic of gun violence in this country as mass shootings threaten the sense of safety for people in public spaces with more Americans dying from gun violence in 2020 than any other year in history; at the [highest rate of gun deaths since 1974](#). And now with the recent over-turning of Roe v Wade, reproductive health and health care access, and women’s health are threatened in ways that will certainly exacerbate existing racial health inequities. These multiple threats to our well-being are fueling an unprecedented mental health crisis as our systems of care are not able to respond to the surge in need for mental health care and treatment. In March 2022, [President Biden released a strategy for our National Mental Health Crisis](#) noting “We cannot transform mental health solely through the health care system. We must also address the determinants of behavioral health, invest in community services, and foster a culture and environment that broadly promotes mental wellness and recovery. This crisis is not a medical one, but a societal one.”

This moment has also brought increased public awareness, discourse, and resources needed to continue to address many of the health and social issues we at the IHESJR address in our research. This is an opportunity for change, and we at the IHESJR will continue with research efforts that provide knowledge needed by communities, public partners, and the academic community to continue to promote health equity and social justice, to engage in anti-racist research practice, and to continue to find new ways to work with communities, local and beyond. We are excited to be developing collaborative partnerships at the NU Charlotte Campus, the Roux Institute in Portland Maine, and the NU Seattle campus as we explore strategies for expanding community-partnered health equity research across the NU campus network, and we

Annual Report

will continue to engage with and support the efforts of the many centers and institutes across Northeastern University engaged in work for social change and promoting health equity.

The students, faculty, staff, and community partners engaged at the Institute have much to be proud of. In this report you will read about the 124 undergraduates who have worked with us as Health Equity Interns (HEI) over the 2 years, under the leadership of Program Director Suzanne Garverich, on projects that address a wide range of public health challenges. Our network of Faculty Scholars provide generous mentorship to our HEIs and they have accomplished great things including receiving 37 [PEAK awards](#) from the Northeastern University Office of Undergraduate Research and Fellowships over the 2 years, publishing with faculty, and supporting and co-creating knowledge with our many partners. And we have much to celebrate and were thrilled to be able to do so in-person this Spring! Four doctoral students working at the IHESJR recently graduated (three in population health and one in sociology) each completing dissertation research poised for social impact, along with many master’s students and HEIs. [Our NU-Public Evaluation Lab \(NUPEL\)](#), in partnership with the Institute on Race and Justice and the School of Public Policy and Urban Affairs, has continued to grow and thrive under the leadership of Tiana Yom, Program Director, and newly appointed Assistant Research Professor. We have celebrated the many accomplishments and promotions of IHESJR Faculty Scholars. With the continued support of the Bouvé Dean’s office we look forward to continuing to grow our community of faculty, students, and staff; our community partnerships; and our research efforts, to best equip us to tackle the work ahead. There is much work to be done and I look forward to continuing that work with you all.

Alisa K. Lincoln

Director, Institute for Health
Equity and Social Justice
Research, Bouvé College of
Health Sciences


Associate Dean of Research,
College of Social Sciences
and Humanities

Professor, Sociology and
Health Sciences




Welcome to the Institute


In the past two years we welcomed new faculty, staff and students to the Institute for Health Equity and Social Justice Research to help further the IHESJR’s mission of promoting health equity and reducing health disparities.



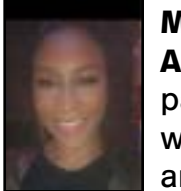
John Olawepo, MBBS, PhD is an **Assistant Clinical Professor** in the Health Science and an IHESJR Faculty Scholar. He conducts research in global health, chronic illnesses, maternal and child health, and implementation science.




Danielle Crookes, DrPH is an **Assistant Professor** in Health Sciences and an IHESJR Faculty Scholar. She conducts research focused on immigrant health.




Daphney Mirand, MS, is a community health professional with experience working to help communities of color tackle health disparities. She is the **Project Manager** of Dr. Beth Molnar’s VTRI, ECMH FIRST, and HRP evaluation grants.




Makiya Polk is the **Institute’s Administrator Coordinator**. She is part of the IHESJR leadership team and works on budgets, office management, and human resource management.




Darien Mather is a **Doctoral Student** in the Population Health PhD program and supported Dr. Beth Molnar’s research.




Thomas Carpenito is a **recent graduate** of the Population Health PhD program and previously supported Dr. Beth Molnar’s research




Sushant Kumar is a **Doctoral Student** in the Public Policy PhD program. Sushant supported Dr. Tiana Yom as part of the Northeastern Public Evaluation Lab (NU-PEL).




Natalia Coriano Diaz is a **Doctoral Student** in the Population Health PhD program and supports Drs. Amy Helburn and Jean McGuire’s research.




Tiffani Elliot is a **Doctoral Student** in the Sociology PhD program and supporting Dr. Alisa Lincoln’s research.




Francesca Korte is a **Doctoral Student** in the Population Health PhD program and supporting Dr. Alisa Lincoln’s research.




Shauvan Sutton is a **Doctoral Student** in the Sociology PhD program and supporting Dr. Alisa Lincoln’s research.




Chloe Nichols is a **Doctoral Student** in the Population Health PhD program and supporting Dr. Beth Molnar’s research.




Vela McBride is a **Master’s Student** in the Master’s of Public Health program and supported the Salus Populi Project as a **Research Assistant**.




David Cruz Mejia is a student in the Master’s in Public Policy Program and supported Dr. Tiana Yom as part of NU-PEL as a **Graduate Research Assistant**.




Ayanna Miller-Smith is a **Doctoral Student** in Criminology and Criminal Justice and supported Dr. Tiana Yom as a part of NU-PEL as an SGA.



Rachel Shaw is a **Doctoral Student** in Sociology and supported Dr. Tiana Yom as a part of NU-PEL as an SGA.



Julia Vasta, a **Master’s Student** in the Public Policy Program, supported Dr. Tiana Yom as part of NU-PEL as a **Research Assistant**.



Vivian Wilt, MPH, CPH, worked on Dr. Beth Molnar’s research team as a **MPH Practicum Student** and then following the practicum as a **Research Assistant**

Capstone Students

- Emily Alves** (Bachelor Capstone)
- Kaleem Amhid** (Graduate Capstone)
- Elizah Becker** (Bachelor Capstone)
- Jennifer Cecili** (Bachelor Capstone)
- Seulji Choi** (Bachelor Capstone)
- John Dalton** (Graduate Capstone)
- Alexander Deger** (Graduate Capstone)
- Chimdiebere Ezeigwe** (Bachelor Capstone)
- Yeji Go** (Bachelor Capstone)
- Zoe Harris** (Graduate Capstone)
- Lindsay Immers** (Bachelor Capstone)

- Ryan Ji** (Bachelor Capstone)
- Phuong Le** (Bachelor Capstone)
- Liz Mariluz** (Bachelor Capstone)
- Atsushi Matsumoto** (Graduate Capstone)
- Meaghan McDougall** (Bachelor Capstone)
- Jeanine Nasser** (Bachelor Capstone)
- Andie Oates** (Bachelor Capstone)
- Inanna Pickering** (Graduate Capstone)
- Alissah Sillah** (Graduate Capstone)
- Sophie Wiltshire** (Bachelor Capstone)
- Marina Yamada** (Bachelor Capstone)

2020-2021 Health Equity Interns

Our Health Equity Internship Program continues to grow. From 2020-2022 we worked with students from seven Northeastern University colleges, including 94 interns in 2020-2021 and 81 interns in 2021-2022. These interns were matched with 35 Research Advisors over the past two years. Interns received experiential learning while working on a Research Advisors’ research related to advancing health equity and reducing health disparities. They also received research related trainings to advance their knowledge and skillset in public health research, such as trainings on: literature reviews by the Health Sciences Librarian Philip Espinola Coombs; research ethics; qualitative research and focus groups, by Institute Faculty Scholar Claudia Santelices; Quatrics software; and secondary trauma and the wellness of the research by NU-PEL leadership Amy Farrell, Alisa Lincoln, and Suzanne Garverich. With the support from Dr. Atsushi Matsumoto in 2020, Suzanne Garverich, Program Director of the Institute supervised the interns.



HEI gathering in October 2021



HEIs at the IHESJR end of the year event, 2022

RISE brings together Northeastern University students of all levels to present their innovative research across the University's colleges. We had a strong presence of Institute students presenting at RISE the past two year as well as continuing support from Faculty.

2021 Presentations
The Trust Project

Kaleem Ahmid, Masters in Public Health
Tyreke Gaston, Psychology
Samhita Koduri, Health Sciences
Alisa Lincoln, Faculty Mentor

Measuring Social Media Influence on Body Image Through Computer Based Avatars, Social Media, and Virtual Environments

Romina Cabrera-Perez, Health Sciences
Aika Misawa, Masters in Health Informatics
Amy Lu, Faculty Mentor

Let Others Love You Back to Health: Exploring the Role of the Arts in Mutual Support Recovery

Grace Carolonza, Communications
Maren Flessen, Theater
Ashley Houston, Population Health PhD
Dani Snyder-Young, Faculty Mentor

Implementation Fidelity of the Healthy Beginning Initiative in Benue State, Nigeria

Chimdiebere Ezeigwe, Health Sciences
John Olawepo, Faculty Mentor

Chimdiebere won the Ethically Informed Research Award

Dating App Use During COVID-19 and the Social Wellbeing of Gender Non-Conforming Individuals

Connor Holmes, Health Sciences
Laura Senier, Faculty Mentor

An Examination of Onset of Comorbidities in the HIV/AIDS Population: A Literature Review

Olivia Hoyt, Biochemistry
Moka Yo-Jeong, Faculty Mentor

Vulnerabilities to and the Socioeconomic Impacts of the Leishmaniasis: A Review

Jorja Kahn, Behavioral Neuroscience
Richard Wamai, Faculty Mentor

Structural and interpersonal Racism Literature Review

Summer Kelly, Health Sciences
Alisa Lincoln, Faculty Mentor

Media Portrayal of COVID-19 Related Water Unaffordability Interventions

Rebecca Li, Health Sciences
Laura Senier, Faculty Mentor

Digital Media Use and Mental Health in College Students during the COVID-19 Pandemic

Winnie Li, Health Sciences
Lichuan Ye, Faculty Mentor

A Literature Review on Advance Care Planning in Persons with HIV

Sabrina Meyer, Nursing

The intersections of Immigration, Employment, and Healthcare Access

Gretchen Moulton, Health Sciences
Ashley Houston, Population Health PhD
Alisa Lincoln, Faculty Mentor

Lessons Learned from Implementing a Statewide System of Care in Early Childhood Mental Health

Shurobhi Nandi, Biochemistry
Daphney Mirand, Staff
Sameera Nayak, Population Health PhD
Beth Molnar, Faculty Mentor

Pills, Teas, and Songs: Stories of Medicine around the World

Debby Nguyen, Pharmacy
Alisa Lincoln, Faculty Mentor

Debby won the Health Communication Award

Pediatric Behavioral Health Integration in Massachusetts Primary Care

Andie Oates, Health Sciences
Beth Molnar, Faculty Mentor

How Does Documentation Status Influence Access to Healthcare?

Michaiah Parker, Health Sciences
Alissah Sillah, Master in Public Health

Shadia Tannier, Health Sciences
Tiffany Joseph, Faculty Mentor

Accessibility of Daystar Life Center: A Nonprofit for Alleviating Hunger and Homelessness

Sophie Wiltshire, Health Sciences
Beth Molnar, Faculty Mentor

Utilization of Peer Professionals in Pediatric Primary Care in Massachusetts

Marina Yamada, Health Sciences
Daphney Mirand, Staff
Sameera Nayak, Population Health PhD
Beth Molnar, Faculty Mentor

2022 Presentations

Addressing Early Childhood Mental Health in Child Welfare: Findings from Massachusetts

Emliy Alves, Health Sciences
Beth Molnar, Faculty Mentor

Prevalence of Mental Health Visit Utilization Among Medicare Beneficiaries

and

Prevalence of Psychiatric Medications Usage Among Medicare Beneficiaries

Jennifer Cecili, Pharmacy
Seulji Choi, Pharmacy
Yeji Go, Pharmacy
Ryan Ji, Pharmacy
Phuong Le, Pharmacy
Sai Shashank Nukala, Master's student
Muhammad Zain Raza, Master's student
Jeanne Madden, Faculty Mentor

Understanding Processes and Impacts of Organizational Re-entry in a Post-COVID World

Aastha Das, International Business
Tiffani Elliot, Sociology PhD
Christina Khalil, Biochemistry
Prakritis Setlur, Cell and Molecular Biology
Kristina Wang, Health Sciences
Alisa Lincoln, Faculty Mentor

Firearm Suicide Prevention

Julia Denlinger, Health Sciences
Alisa Lincoln, Faculty Mentor

Effect of Community-Based Approach on Demand for SCD Newborn Screening in Nigeria

Maisha Gregory, Nursing
Madeline Gully, Health Sciences
John Olawepo, Faculty Mentor

Tackling Disparities in Care for Somali-American Children with Disabilities: A Structured Approach

Rayna Haque, Health Sciences
Carmel Salhi, Faculty Mentor

Trauma Informed Public Health Policies: A Literature Review of Community-Level Interventions

Sinead Hassan, Health Sciences
Shan Mohammed, Faculty Mentor
Evaluation of a Harm Reduction Training (HaRT) Program

Norlida Jean, Biology
Medha Sthalekar, Health Sciences
Bryanna Testino, Cell and Molecular Biology
Emily Mann, Faculty Mentor

Retention in Care among People Living with HIV in Nigeria

Kathrine O'Brien, Health Sciences
Julia Papisodoro, Health Sciences
John Olawepo, Faculty Mentor

Interprofessional Trauma-Informed Education: Training within the New Generation

Claudia Pressat, Health Sciences
Shan Mohammed, Faculty Mentor

Staying Connected While Staying Apart: Intergenerational Tutoring in the Time of COVID-19

Nihala Razack, Health Sciences
Aniyah Travis, Health Sciences
Jessica Hoffman, Faculty Mentor

Understanding Firearm Owners Perspectives on Firearm Suicide Prevention in the United States

Dorian Stump, Health Sciences
Alisa Lincoln, Faculty Mentor

Beyond Naloxone: An Examination of Disparities in Post-Opioid Emergency Community Paramedicine

Kyle Willette, Health Sciences
Leo Beletsky, Faculty Mentor

PEAK Experience Awards

In the past two years IHESJR interns have received 35 PEAK Awards, funded through the Office of Undergraduate Research and Fellowships. The PEAK Experience Awards are a progressively structured sequence of opportunities designed to support learners as they continue climbing to new heights of achievement in undergraduate research and creative endeavor throughout students' Northeastern journeys.



PEAK AWARDEES

Anisa Amiji (fall 2020), *Examining Information-Seeking During COVID-19*, supported by Dr. Miso Kim, College of Arts, Media and Design

Lujane Barakat (spring 2021), *Oral Health Behaviors and Self-Image*, supported by Dr. Rachel Rodgers, Bouvé College of Health Sciences

Cullen Bober (fall 2020), *Exploring DIH Charges and Carceral Budgets*, supported by Professor Leo Beletsky, Bouvé College of Health Sciences and Law School

Julia Denlinger (fall 2021), *Firearm Suicide Prevention Strategies for Firearm Owners and the Preventability of Firearm Suicide*, supported by Dr. Alisa Lincoln, Bouvé College of Health Sciences and College of Social Sciences and Humanities

Julia Denlinger (spring 2022), *Firearm Suicide Prevention*, supported by Dr. Alisa Lincoln, Bouvé College of Health Sciences and College of Social Sciences and Humanities

Julia Dierker (fall 2021), *Mixed-Method Telehealth Research*, supported by Dr. Dami Ko, Bouvé College of Health Sciences

Kevin Dunne (summer 2021), *COVID-19 and Mental Health*, supported by Dr. Bilge Erten, College of Social Sciences and Humanities

Kevin Dunne (fall 2020), *COVID-19 and Domestic Violence*, supported by Dr. Bilge Erten, College of Social Sciences and Humanities

Jasper Duval (fall 2020), *The Shame of the Slum: An Exploratory Study of Territorial Stigma and Mental Wellbeing in a Non-Notified Settlement in Mumbai*, supported by Dr. Liza Weinstein, College of Social Sciences and Humanities

Jasper Duval (spring 2021), *The Shame of the Slum: An Exploratory Study of Territorial Stigma and Mental Well-Being in a Non-Notified Settlement in Mumbai*, supported by Dr. Liza Weinstein, College of Social Sciences and Humanities

Jasper Duval (summer 2021), *'We Live in Garbage': Legal Exclusion in a Non-Notified Settlement in Mumbai*, supported by Dr. Liza Weinstein, College of Social Sciences and Humanities

Jasper Duval (summer 2021), *'Pray to the Mumbai Government': Government Officials and Legal Exclusion in a Non-notified Settlement in India*, supported by Dr. Liza Weinstein, College of Social Sciences and Humanities

Angelica Fiuza (fall 2020), *Twenty Seconds a Day: The Impact of Tiktok Diet Culture Content on Young Women*, supported by Dr. Rachel Rodgers, Bouvé College of Health Sciences

Owen Graham-O'Regan (fall 2021), *Changing Laws or Changing Norms? The Impact of Female Leadership on Intimate Partner Violence in India*, supported by Dr. Bilge Erten, College of Social Sciences and Humanities

Rayna Haque (fall 2020), *A Qualitative Review of Mental Health and Exposure to Violence in Resettled Refugees*, supported by Dr. Carmel Salhi, Bouvé College of Health Sciences

ported by Dr. Carmel Salhi, Bouvé College of Health Sciences

Rayna Haque (fall 2020), *Somali Parent Perspectives on Barriers to Diagnosis in Children with Developmental Disability*, supported by Dr. Carmel Salhi, Bouvé College of Health Sciences

Cate Henning (fall 2020), *Drug-Induced Homicides: The Solution or the Problem?*, supported by Professor Leo Beletsky, Bouvé College of Health Sciences, School of Law

Conner Holmes (spring 2021), *Exploring Transgender, Non-binary, and Genderqueer Dating App Use*, supported by Dr. Laura Senier, Bouvé College of Health Sciences and College of Social Science and Humanities

Meghna Iyer (fall 2020 and fall 2021), *Improving Guardrail Damage Reporting to Promote Injury Prevention in Motor Vehicle Accidents*, supported by Dr. Alisa Lincoln and Suzanne Garverich, Bouvé College of Health Sciences

Kenadi Kaewmanprasert (fall 2020), *Influence of Documentation Status and Race on Immigrant Healthcare Access*, supported by Dr. Tiffany Joseph, College of Social Sciences and Humanities

Summer Kelly (spring 2022), *UN-Masking the Origins of Maternal Mortality/Morbidity Inequities*, supported by Dr. Alisa Lincoln, Bouvé College of Health Sciences and College of Social Sciences and Humanities

Eva Kuruvilla (spring 2021), *Defining Healthy Eating: A Delphi Consensus Study*, supported by Dr. Rachel Rodgers, Bouvé College of Health Sciences

Winnie Li (fall 2020), *Digital Media Use and Mental Health in College Students*, supported by Dr. Lichuan Ye, Bouvé College of Health Sciences

Haley Moriarty (fall 2021), *Parenting in the Time of Social Media: A Qualitative Study of Parental Involvement in Teens' Social Media Use*, supported by Dr. Rachel Rodgers, Bouvé College of Health Sciences

Nikita Murlu (summer 2021), *Tracking Drug-Induced Homicide (DIH) Charges in the United States*, supported by Professor Leo Beletsky, Bouvé College of Health Sciences, School of Law

Shurobhi Nandi (fall 2020), *Improving Access to Early Childhood Mental Health Services in Child Welfare*, supported by Dr. Beth Molnar, Bouvé College of Health Sciences

Thao-Mi Nguyen (summer 2021), *Un-Masking the Origins of Maternal Mortality/Morbidity Inequities (UMOMMI)*, supported by Dr. Collete Ncube, Bouvé College of Health Sciences

Gal Nissan (fall 2020), *The Longitudinal Effects of Body Image Concerns on Health Outcomes*, supported by Dr. Rachel Rodgers, Bouvé College of Health Sciences

Maya Rabow (fall 2020), *The Longitudinal Effects of Body Image Concerns on Health Outcomes*, supported by Dr. Rachel Rodgers, Bouvé College of Health Sciences

Dorain Stump (fall 2021 and Spring 2022), *American Firearm Suicide Prevention Project*, supported by Dr. Alisa Lincoln, Bouvé College of Health Sciences and College of Social Sciences and Humanities

Ciara Sosnowski (summer 2021), *Arts, Health, and Wellbeing: A Literature Review*, supported by Dr. Rebekah Moore, College of Arts, Media, and Design

Valerie Do Vale (fall 2020), *Immigrants' Healthcare Access Under Shifting Public Policies*, supported by Dr. Tiffany Joseph, College of Social Sciences and Humanities

Morgan Wong (summer 2021), *Un-Masking the Origins of Maternal Mortality/Morbidity Inequities (UMOMMI)*, supported by Dr. Collete Ncube, Bouvé College of Health Sciences

Yechan (Ben) Yang (summer 2021), *LGBTQ Health Care Disparities in Telemedicine*, supported by Dr. Alisa Lincoln and Suzanne Garverich, Bouvé College of Health Sciences

Julia Zalvino (fall 2021), *Which Types of Social Media Are Helpful for Body Image: Hearing from Diverse Youth*, supported by Dr. Rachel Rodgers, Bouvé College of Health Sciences

Health Equity Faculty Scholars Program

Our Faculty Scholars program provides an opportunity for faculty from colleges across the University to engage in research with shared commitments to health equity and social justice to come together for shared learning opportunities, mentor Health Equity Interns, and to facilitate interdisciplinary research collaborations. With the support of the Dean’s Office of Bouvé College of Health Sciences, we have been able to provide funding to support faculty as they develop their research portfolios in advancing the goals of health equity for diverse populations made vulnerable through marginalization and exclusion.

Advancing Health Equity Pilot Awards

Jordon Bosse, PhD, RN, School of Nursing, Bouvé College of Health Sciences, *Moral Reckoning with Nurses’ Actions, Inactions, and Silence that May Perpetuate Health Inequity Among Lesbian, Gay, Bisexual, Transgender, and Queer (LGBTQ+) People* (2021)

Leanne Chukoskie, PhD, Physical Therapy, Movement & Rehabilitation Sciences, Bouvé College of Health Sciences and Art + Design, College of Arts, Media, and Design, *An International Game Jam* (2022)

Danielle Crookes, DrPH, Health Sciences, Bouvé College of Health Sciences, *Sanctuary Policies and Receipt of Preventative Cardiovascular Care among Immigrants in the U.S.* (2022)

Lorna Hayward, PhD, Physical Therapy, Movement & Rehabilitation Sciences, Bouvé College of Health Sciences, *Increasing Access to Equitable Adaptive Sports Opportunities to Promote Physical and Mental Health for College Students with Disabilities* (2022)

Jessica Hoffman, MEd, PhD, Applied Psychology, Bouvé College of Health Sciences, *Intergenerational Tutoring: Older Adults Supporting Children’s Academic Needs via Video Conferencing* (2021)

Tiffany Joseph, PhD, Sociology and Anthropology, College of Social Sciences and Humanities, *(Not) All In: Race, Ethnicity, Immigration, Exclusion, and Health Care in America’s City on a Hill* (2021)

Miso Kim, PhD, Art and Design, College of Arts, Media, and Design, *Learning from Deaths During COVID-19 – Exploring the Principle of Dignity for End-of-life Care Services* (2021)

Jeanne Madden, PhD, Sc.M., Pharmacy and Health Systems Sciences, Bouvé College of Health Sciences, *Access to Mental Health Care among Medicare Beneficiaries* (2021)

Rebekah Moore, PhD, MA, Music, College of Arts, Media, and Design, *Advancing Racial and Health Equity through the ARTs: A Community-Engaged Research Study in the City of Boston* (2022)

John Olawepo, MBBS, PhD, Health Sciences, Bouvé College of Health Sciences, *Impact of Community-and Incentive-based Approaches on the Demand for Sickle Cell Disease Newborn Screening in Nigeria* (2021)

John Olawepo, MBBS, PhD, Health Sciences, Bouvé College of Health Sciences, *An Exploration of Barriers to and Facilitators of Sickle Cell Disease Newborn Screening in Nigeria: A Qualitative Study* (2022)

Rachel Rodgers, PhD, Applied Psychology, Bouvé College of Health Sciences, *Food Industry Literacy Intervention* (2021)

Rachel Rodgers, PhD, Applied Psychology, Bouvé College of Health Sciences, *Towards Parent-led Intervention for Body Inclusiveness* (2022)

Carmel Salhi, ScD, Health Sciences, Bouvé College of Health Sciences, *How do Parents of Children Admitted to the Emergency Department for a Mental Health Crisis View the Role of Clinicians Around Firearm Safety?* (2021)

Claudia Santelices, PhD, Health Sciences, Bouvé College of Health Sciences, *Impact of Drug Checking Technologies on Drug Using Behaviors* (2021)

Dani Snyder-Young, MA, PhD, Theater, College of Arts, Media, and Design, *Studying Social Stigma and Affect in Diverse Audiences of This is My Treatment* (2022)

Faculty Scholars

Meryl Alper, PhD, Communication Studies, College of Arts, Media, and Design
Benita Bamgbade, Pharm D, PhD, School of Pharmacy, Bouvé College of Health Sciences
Jordon Bosse, PhD, RN, Nursing, Bouvé College of Health Sciences

Linda Blum, PhD, Sociology and Anthropology, College of Social Sciences and Humanities
Leo Beletsky, JD, MPH, Health Sciences, Bouvé College of Health Sciences and School of Law

Danielle Crookes, DrPH, Health Sciences, Bouvé College of Health Sciences
Bilge Erten, PhD, Economics and International Affairs, College of Social Sciences and Humanities
Jean Flatley McGuire, PhD, Health Sciences, Bouvé College of Health Sciences

Elizabeth Glowacki, PhD, Communication Studies, College of Arts, Media, & Design and Health Sciences, Bouvé College of Health Sciences
Amy Helburn, PhD, Health Sciences, Bouvé College of Health Sciences
Tad Hirsch, PhD, Art and Design, College of Arts, Media, and Design

Jessica Hoffman, PhD, MEd, Applied Psychology, Bouvé College of Health Sciences
Sara Jensen Carr, PhD, Architecture, College of Arts, Media and Design
Rachel Jones, PhD, RN, FAAN, School of Nursing, Bouvé College of Health Sciences
Tiffany Joseph, PhD, Sociology and International Affairs, College of Social Sciences and Humanities

Miso Kim, PhD, MDes, Experience Design, College of Arts, Media, and Design
Dami Ko, PhD, RN, School of Nursing, Bouvé College of Health Sciences
Danielle Levac, PhD, Physical Therapy, Movement & Rehabilitation Sciences, Bouvé College of Health Sciences

Chieh Li, Ed.D., NCSP, Applied Psychology, Bouvé College of Health Sciences
Margo Lindauer, JD, LLM, Health Sciences, School of Law
John Lowrey, PhD, MAE, MBA, M. Supply Chain & Information Management, D’Amore-McKim School of Business and Health Sciences, Bouvé College of Health Sciences

Amy Lu, PhD, Communication Studies, CAMD, Health Sciences, Bouvé College of Health Sciences
Jeanne Madden, PhD, Sc.M., Pharmacy and Health Systems Sciences, Bouvé College of Health Sciences
Cassie McMillan, PhD, Sociology and Criminology & Criminal Justice, College of Social Sciences and Humanities

Shan Mohammed, MD, PhD, FAAFP, Health Sciences, Bouvé College of Health Sciences
Beth Molnar, ScD, Health Sciences, Bouvé College of Health Sciences
Rebekah Moore, PhD, Music, College of Arts, Media, and Design

John Olawepo, MBBS, PhD, Health Sciences, Bouvé College of Health Sciences
Kara Pavone, PhD, RN, School of Nursing, Bouvé College of Health Sciences
Rachel Rodgers, PhD, Applied Psychology, Bouvé College of Health Sciences
Carmel Salhi, ScD, Health Sciences, Bouvé College of Health Sciences

Claudia Santelices, PhD, Health Sciences, Bouvé College of Health Sciences
Carmen Sceppa, MD, PhD, Dean’s Office, Bouvé College of Health Sciences
Laura Senier, MPH, PhD, Sociology and Anthropology, College of Social Sciences and Humanities; Health Sciences, Bouvé College of Health Sciences

Dani Snyder-Young, PhD, Theater, College of Arts, Media, and Design
Julia Varshavsky, PhD, MS, Health Sciences, Bouvé College of Health Sciences and Civil and Environmental Engineering, College of Engineering
Liza Weinstein, PhD, Sociology and Anthropology, College of Social Sciences and Humanities

Lichuan Ye, PhD, RN, School of Nursing, Bouvé College of Health Sciences
Moka Yoo-Jeong, PhD, NP-C, RC, OCN, School of Nursing, Bouvé College of Health Sciences



Works in Progress Series

In it's 4th and 5th years, this series gave Faculty Scholars an opportunity to present on their current research focused on advancing health equity. It is a time where faculty, staff, and students can learn more about the work being done in the field of health equity as well as provide a time for presenting faculty to receive feedback on their ongoing research.

Fall 2020 and Spring 2021

Designing for the Autonomy of Older Adults

Miso Kim, PhD, Art and Design, College of Arts, Media, and Design
September 24, 2020



Unrelieved Pain: Healthcare's Consistent Challenge

Kara Pavone, PhD, RN, School of Nursing, Bouvé College of Health Sciences
October 22, 2020



Who Should be Screened for Lung Cancer based on National Lung Cancer Screening Guidelines?

Hermine Poghosyan, PhD, MPH, School of Nursing, Bouvé College of Health Sciences
November 19, 2020



Advancing Alignment through State Government Practices: Identifying Fundamental Structural Changes Needed to Enable Social Services' Role as Full Partners with Healthcare

Jeanne FlatleMcGuire, Health Sciences, Bouvé College of Health Sciences
January 25, 2021



How Can We Use Low-Cost Immersive Virtual Reality Headsets to Promote Growth Mindset Development in Children and Youth?

Danielle Levac, PhD, Physical Therapy, Movement & Rehabilitation Sciences, Bouvé College of Health Sciences

February 22nd, 2021



Expanding Bouve's Footprints in Sub-Saharan Africa: Nigeria and Research Possibilities

John Olawepo, MBBS, PhD, Health Sciences, Bouvé College of Health Sciences

March 2, 2021



Salus Populi: Educating the Judiciary About the Social Determinants of Health

Salus Populi Research Team (Wendy Parment, Jennifer Huer, Faith Kahalik, Alisa Lincoln, Alex Alden, Eri Lee, Madison Haywood, Maya Clark)

Co-sponsored by the Center for Health Policy and Law Roundtable Series

March 22, 2021



Breast Cancer Previvors and Survivors in the Pandemic: A Pilot Study Exploring HBOC (hereditary breast and ovarian cancer) Online Peer Support

Linda Blum, PhD, Sociology and Anthropology, College of Social Sciences and Humanities

April 26, 2021



Exploring Stigma-Reduction Approaches for Mental Health Promotion Technologies

Teresa O'Leary, Doctoral Student, Personal Health Informatics, Khoury College of Computer Science and Bouvé College of Health Sciences

May 17, 2021



Fall 2021 and Spring 2022

Intergeneration Tutoring: Older Adults Supporting Young Children's Early Literacy Development via Zoom During COVID-19

Jesica Hoffman, PhD, Applied Psychology, Bouvé College of Health Sciences

September 27, 2021



Aging and Isolation

Bilge Erten, PhD, Economics and International Affairs, College of Social Sciences and Humanities (top left, below)

Miso Kim, PhD, MDes, Experience Design, College of Arts, Media, and Design (top right, below)

Tiana Yom, Ed.D., CHES, Bouvé College of Health Sciences and College of Social Sciences and Humanities (bottom left, below)

Moka Yoo-Jeong, PhD, RN, Nursing, Bouvé College of Health Sciences (bottom right, below)
October 25th, 2021



Using the Law to Advance Reform in the "Rehab Industrial Complex"

Leo Beletsky, JD, Health and Justice Action Lab, School of Law and Health Sciences, Bouvé College of Health Sciences (left, below)

Amelia Caramadre, Health and Justice Action Lab, School of Law (right, below)

Co-sponsored by the Center for Health Policy and Law Roundtable Series (2nd from left, below)
February 7th, 2022



Dismantling Racism and Structural Racism in Academic Public Health

Shan Mohammed, MD, PhD, FFAFP, Health Sciences, Bouvé College of Health Sciences
March 28, 2022



Impact of Drug Checking Technologies on Drug Using Behaviors: A Qualitative Approach

Claudia Santelices, PhD, Health Sciences, Bouvé College of Health Sciences
April 25th, 2022



The Northeastern University Public Evaluation Lab (NU-PEL)

NU-PEL is an interdisciplinary lab created in 2018 through support from a Tier 1 grant from the Northeastern University Office of Research Development, Bouvé College of Health Sciences, and the College of Social Sciences and Humanities. Faculty from the Institute for Race and Justice and the IHESJR created a lab that brings together faculty and students with an interest and commitment to developing community partnered evaluation efforts.

The vision of NU-PEL is to build a community-academic partnership to improve local communities and enhance the well-being of the people living in them through the use of evaluation research. This is accomplished by bringing together expertise and resources to advance the theory, practices, and utilization of evaluation through research, education, and services.

New Grant Highlights



The **Metro West Health Foundation** selected NU-PEL to lead a comprehensive evaluation project to understand and improve upon the current public health infrastructure in MetroWest. The team consists of Drs. Tiana Yom, Alisa Lincoln, and Laura Senier as well as graduate and undergraduate students from the College of Social Science and Humanities and Bouve College of Health Sciences.



NU-PEL will be the evaluator on the **FY 22 Tier 1 mentored grant** received by Drs. Miso Kim, Tiana Yom, and Moka Yoo-Jeong and faculty member Alisa Lincoln which will explore and understand the social connections and well-being of Older Persons Living with HIV (OPLWH).



Dr. Sara Wadia-Fascetti (PI) and Dr. Cigdem Talgar, Dr. Tiana Yom, Danial Rothstein, and Luz Santana (Co-PIs) were awarded a **National Science Foundation (NSF)** grant. This is a great example of NU-PEL's commitment to interdisciplinary work between College of Engineering, the Provost's Office and NU-PEL.

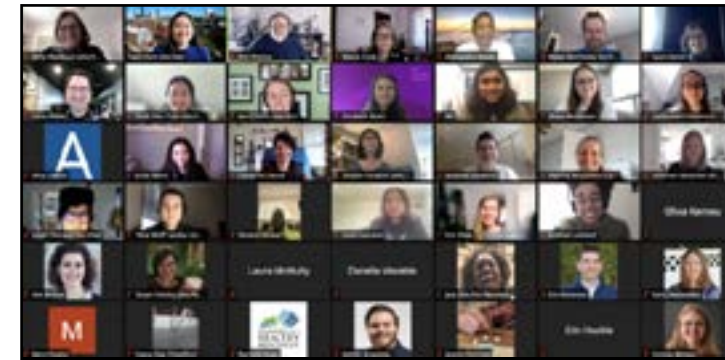


This project funded by the **Massachusetts Department of Children and Families (MDCF)** aims to explore the process of creating an index to measure vulnerability and risk to Commercial Sexual Exploitation of Children (CSEC) victimization at the neighborhood and community levels. Dr. Amy Farrell is the PI and the Co-PIs are Drs. Kayse Maass and Tiana Yom.

For more information on NU-PEL go to:
<https://bouve.northeastern.edu/nu-pel/>

Collaborations

Culturally Responsive Evaluation (CRE) Series



As a community-academic collaborative response to the ongoing social injustices and to be in solidarity with Black Lives Matter, NU-PEL's Director, Dr. Tiana Yom, and the Greater Boston Evaluation Network (GBEN)'s Programming Team, Kelly Washburn and Calpurnya Roberts, have partnered to create a virtual, year-long professional development and training series, focusing on Culturally Responsive Evaluation (CRE).

The inaugural event took place on November 16, 2020 with guest speaker, Dr. Zinzi Bailey from University of Miami, Robert Wood Johnson Foundation's Interdisciplinary Research Leaders program. The second event took place on April 6th, 2021 and featured a panel of expert evaluators, Dr. Alemayehu Bekele, Dr. Marcia Coné, and Noe Medina. Panelists shared how CRE is used in their work, challenges, as well as provided recommendations on how to implement CRE in practice. The third event took place on March 31st, 2022. *How to Build in CRE into Design of an Evaluation* continued the CRE series and Dr. Mindelyn Anderson led the 90-minute learning session where participants were able to draft and practice creating tools for CRE.



The Boston Public Health Commission and the Institute for Health Equity and Social Justice Research hosted a session at the 2022 BARI Conference: *Public Health: How Do we Translate Evidence into Health Equity?* Lightning talks were given at this session and included IHESJR Faculty Scholars, Program Director of the Northeastern Public Evaluation Lab (NU-PEL) and Affiliated Faculty:

Danielle Crookes, IHESJR Faculty Scholar, Assistant Professor, Health Sciences and Sociology, "Sociopolitical Drivers of Immigrant's Health in the U.S."

Tiana Yom, Program Director, Northeastern University Public Evaluation Lab - "Social Connections and Well-Being Among Older Adults Living With HIV (OALWH) during COVID-19 Pandemic"

Collette Ncube, IHESJR Affiliated Faculty, Assistant Professor of Epidemiology, Boston University - "A systems science perspective on racial/ethnic disparities in maternal and infant health outcomes"



Community-Engaged Teaching and Research and the Institute for Health Equity and Social Justice Research convened a forum to have a conversation around building meaningful mentor and mentee relationships in a professional setting on September 22, 2021.

Panelists included mentorship pairs Dr. Gail Begley and Adrianna Graziano, Sameera Nayak and Shurobhi Nandi, Dr. Tiana Yom and Isabelle Carrillo. The conversation was moderated by Dr. Shan Mohammed.

Building Back Strong: Health and Racial Equity Lessons Learned During COVID-19

Building Back Stronger: Health and Racial Equity Lessons Learned During COVID-19

A panel discussion with representatives with state and local health and mental health agencies related to racial and health equity lessons learned during COVID-19



December 8, 2021 | 3 PM - 4:30 PM

Register for the event here:
<https://northeastern.zoom.us/j/96973484294>

After registering, you will receive a confirmation email containing information about joining the meeting.

Institute for Health Equity and Social Justice Research hosted a panel discussion with representatives from state and local health and mental health agencies on racial and health equity lessons learned during COVID-19 on December 8, 2021. Panel members included:

Antonia Blinn, CPHQ, LSSBB
Director, Performance Management & Quality Improvement Massachusetts Department of Public Health

Martin Cohen, MSW
CEO/President, MetroWest Health Foundation

Sarimer Sánchez, MD, MPH
Director, Infectious Diseases Bureau Boston Public Health Commission

Margaret Guyer
Principal Investigator - DMH SAMHSA COVID-Emergency grant Massachusetts Department of Mental Health

Institute Affiliated Faculty Research

Institute faculty are engaged in many research efforts across the University. Here we highlight their research focusing on health equity and social justice, by showcasing 1) all newly awarded grants from July 1, 2020 to June 30th, 2022 and 2) continuing research grants.

2020-2022 Newly Awarded Grants

Climate Change and Health

Funder: Northeastern University, College of Arts, Media, and Design Dean's Office

This project, done in partnership with fellow IHESJR Faculty Scholar Dr. Miso Kim, examines the physical and mental health burden of climate change on young adults. Via journals, surveys, and design exercises we seek to understand attitudes toward climate change and climate change communication, which we hypothesize may range from nihilism to hope, as well their sense of agency towards the future.

Sara Jensen Carr, Co-PI
Miso Kim, Co-PI
Michael Arnold Mages, Co-PI
Susan Mello, Co-PI
Estefania Ciliotta Chehade, Postdoctoral Assistant
Yechan (Ben) Yang, Health Equity Intern
Madison Thomas, Health Equity Intern

Understanding the Physical and Psychological Health and Wellness Needs of Minor Sex Trafficking Victims

Funder: National Institute for Justice

Sex trafficking victimization is associated with serious health consequences including posttraumatic stress disorder, depression, anxiety, sexually transmitted infections, and substance use disorders among others. Trafficking survivors also experience problems obtaining medical and mental health care. However, little is known about the specific health consequences of sex trafficking of minors as our field is primarily informed by research on adults and with non-US samples, limiting the generalizability to US youth. In particular, we lack rigorous data about the physical and psychological health consequences of minor sex trafficking and health access behavior for MST survivors. The proposed study will utilize a robust sampling mechanism

to capture the experiences of a large sample of MST survivors in the U.S. to investigate the above-listed topics.

Amy Farrell, PI
Carlos Cuevas, PI
Alisa Lincoln, Research Scientist
Sara Lockwood, SCCJ Doctoral Student

Biographical Disruption? Transitions from College to Adulthood Amid the Pandemic and Its Aftermath: a Longitudinal Study

Funder: Spencer Foundation

Through the Sociology and Anthropology Department of Northeastern University's College of Social Science and Humanities this grant will examine the impact of COVID-19 on the transition from college to adulthood.

Linda Plum, PI

Hospital-Physician Integration: Implications for Health Equity and Care for Seniors

Funder: Northeastern University, Tier 1

This project will examine the impact of hospital-physician integration on health care quality, costs, and racial disparities among elderly patients with cancer and cardiovascular conditions.

Hermine Poghosyan, Co-PI
Brady Post, Co-PI
Gary J. Young, Co-PI
Laura Senier, Co-PI

Salus Populi: Educating the Judiciary about the Social Determinants of Health

Funder: Robert Wood Johnson Foundation

This project is in collaboration with the Center for Health Policy and Law at Northeastern University School of Law and the Institute for Health Equity and Social Justice Research and seeks to provide guidance and training to judges on the impact of the law on the social determinants of health.

Community Service Opportunities

Every semester the IHESJR commits to supporting a community organization in its mission to provide services to those in need. Over two years the members of the IHESJR community supported several organizations.



(left to right): Krystal Abbott, Makiya Polk, Tiffani Elliott, Suzanne Garverich, Danielle Crookes, Vela McBride (Alisa Lincoln not shown)

In the spring of 2022 we were pleased to work again with Community Servings, an organization whose mission is to actively engage the community to provide medically tailored, nutritious, scratch-made meals to chronically and critically ill individuals and their families.

We also worked with Cradles to Crayons and Women's Lunch Place. Cradles to Crayon's mission is to provide the essential items that children in struggling families need to thrive at school, to participate more fully in life, and to just be a kid. We did a coat drive as well as created inspirational cards for the kids.

The Women's Lunch Place inspires hope and supports the development of self-sustaining skills for women experiencing hunger, homelessness, and poverty. We supported a drive to collect and purchase needed products for the women.



Wendy Parmet, Faculty Director
Alisa Lincoln, Faculty Director
Jennifer Huer, Managing Director
Faith Khalik, Legal Fellow
Alexandra Alden, Graduate Research Assistant
Mahathi Bermireddy, Graduate Research Assistant
Mackenzie Darling, Graduate Research Assistant
Ada Peters, Graduate Research Assistant

The Impact of Sanctuary Policies on Cardiovascular Disease Risk Factor Screening among Adult Immigrants in the U.S.

Funder: Robert Wood Foundation

The goal of this project is to examine the effects of county-level sanctuary policies, especially in the context of state-level immigrant policies, on CVD risk factor screening among immigrants of color.

Danielle M. Crookes, PI

Harm Reduction Training (HaRT) Program Evaluation: RIZE MA

Funder: RIZE MA

Through the HaRT Scholars program, RIZE seeks to learn how to successfully transform graduate education for social workers to include principles and practices of harm reduction with the goal of replicating these learnings across Massachusetts and the country. In addition, the program aims to: 1) promote a culture of harm reduction; 2) increase the clinical presence at harm reduction organizations/agencies to improve linkages to behavioral health and medical treatment; and 3) increase the presence of racially, ethnically, and socioeconomically diverse social workers in the work of harm reduction.

Emily Mann, PI
Lori Gardiner, Co-PI
Margot Abels, Co-PI
edh Sthalekar, Research Assistant
Norlda Jean, Health Equity Intern
Ivy Khevali, Health Equity Intern
William Schewitzer, Health Equity Intern
Bryanna Testino, Health Equity Intern

OurSleepKit: A Couple-focused mHealth Intervention to Support Adherence to CPAP Treatment

Funder: National Institute of Health/National Heart, Lung, and Blood Institute

Our interdisciplinary team has developed a prototype of OurSleepKit, which is an innovative couple-focused mobile health tool to promote CPAP adherence. OurSleepKit aims to coach mutual engagement and model positive partner involvement in CPAP treatment, thus motivating greater CPAP adherence. The goal of this RO1 project is to use a participatory approach to refine OurSleepKit and comprehensively evaluate both its effect on CPAP adherence and user engagement.

Lichuan Ye, PI

Moral Reckonings with Nurse's Actions, Inactions, and Silence that May Perpetuate Health Inequities among LGBTQ+ People

Funder: Humanities Center Fellowship

The first part of the study was to explore the healthcare experiences of transgender and nonbinary (TG/NB) individuals through Twitter posts. Two groups of TG/NB folks are being recruited to take part in a workshop to create a digital story about workplace/healthcare experiences and will also complete interviews to learn more about how the story they created is related to their workplace/healthcare experiences more broadly.

Jordon Bosse, PI
Lauren Glupe, Health Equity Intern
Allison McLaughlin, Health Equity Intern
Sare Nonoyama, Health Equity Intern

National Library of Medicine Grant for Scholarly Works in Biomedicine and Health

Funder: National Library of Medicine, National Institutes of Health

NLM Grants for Scholarly Works in Biomedicine and Health are awarded for the preparation of book-length manuscripts and other scholarly works of value to U.S. health professionals, public health officials, biomedical researchers and historians of the health sciences.

Tiffany Joseph, PI
Kevin Ha, Sociology PhD student

Evaluation of the School-based Healthy Relationships Project for Prevention of Child Sexual Abuse among Children Pre-K through 5th Grade

Funder: Center for Disease Control and Prevention

This study is a rigorous evaluation of a school-based child sexual abuse prevention program, the Healthy Relationships Project, developed by the non-profit community agency Prevent Child Abuse Vermont. A stepped wedge randomized clinical trial will be utilized to test the efficacy of the program among children pre-K through 5th grade in 16 public schools in Washington, DC. The program has been implemented in 30 U.S. states, including statewide in Vermont and since its implementation, substantiated cases in Vermont dropped 72% between 1992 and 2020, and the number of child perpetrators dropped 77%. We hope to show that the intervention is associated with a change in reported cases of child sexual abuse and increased knowledge and self-efficacy of caregivers and teachers.

Beth Molnar, PI
Christi Rizzo, Co-I
Farzad Noubary, Co-I
Daphney Mirand, Project Manager
Chloe Nichols, Population Health SGA
Benchize Fleuraguste, Nursing PhD Student
Olivia Hirsch, Health Equity Interns

Ongoing Research

Evaluation study of ECMH FIRST (Early Childhood Mental Health; Family, Independence, Resilience, Support, and Treatment)

Funder: SAMSHA subcontract from the Boston Public Health Commission

ECMH FIRST project began in October 2019 and expands the LAUNCH/MYCHILD model previously developed and evaluated by this team to a novel setting. The direct-service goal of ECMH FIRST is to improve access to high-quality, culturally competent, evidence-based behavioral health services through an innovative Family Partner/Clinician service model for children age 0-48 months and their families in Boston who are involved with the child welfare system. The project employs a family partner, clinician, and service coordinator to implement the evidence-informed LAUNCH-MYCHILD model to better identify and serve families with children who are either at high risk for social, emotional and/or behavioral problems, or who already show symptoms of severe emotional disturbances. The evaluation study is a mixed methods design combining analyses of data from assessments of children and caregivers by clinical staff over time with qualitative data from interviews and process evaluation measures.

Beth Molnar, Lead Evaluator
Farzad Noubary, Biostatistician
Daphney Mirand, Project Manager
Sameera Nayak, Population Health PhD Candidate
Chloe Nichols, Population Health PhD SGA
Benchize Fleuragust, Nursing PhD Student
Atsushi Matsumoto, MPH Student
Emily Alves, Capstone Student
Aniyah Travis, Co-op Student
Katherine Baker, Health Equity Intern
Olivia Hirsch, Health Equity Intern
Helen Ji, Health Equity Intern

Water Unaffordability in the United States: Using Principles of Organizational Learning to Understand Municipal Capacity to Safeguard Social Justice and Human Rights

Funder: National Science Foundation (Sociology program)

The United Nations has recognized access to sufficient, safe, acceptable, physically accessible, and affordable water and sanitation as fundamental human rights. Nevertheless, the cost of household water and sanitation services for U.S. consumers has risen much faster than the general cost of living in the 21st century. Nonpayment of water bills is increasing and water utilities in some cities have responded by shutting off water delivery to households with unpaid bills. This project will identify the historical, ecological, demographic, technological, political, and legal factors that contribute to water unaffordability, and assess the consequences of escalating water costs for vulnerable populations. We will show how a city's organizational capacity, e.g., fiscal and economic resources, formal policies, physical infrastructure, information system resources, and the skill and professional training of city employees, affects the design and implementation of city policies on water affordability. The project will also illustrate the extent to which certain types of policies and practices disproportionately affect elderly, disabled, low-income, and non-white Americans. Our findings will help government officials identify forces that create variations in water affordability policies, and will also develop educational materials to facilitate partnerships between municipal officials, water utility managers, and the public, to help them improve local water affordability and assistance programs.

Laura Senier, PI
Sharon Harlan, Co-I

Martha Davis, Co-I
Daniel Alvord, Postdoctoral Research Associate
Matthew Canary, Undergraduate Research Assistant
Rebecca Li, Undergraduate Research Assistant
Liz Mariluz, Undergraduate Research Assistant
Ramya Kumar, Health Equity Intern

Artists in Recovery: The role of theatre participation and arts-integrated peer leadership in substance addiction recovery processes

Funder: National Endowment for the Arts

This study examines the ways participation as an actor in a theatre-integrated programs engaging with substance addiction and recovery supports performers with their own recovery processes. In Boston, two such groups have worked with more than 350 people to develop peer leaders in substance addiction recovery processes: The Improbable Players and the Phoenix Tales Recovery Storytelling Project. The Improbable Players, an ensemble performing a repertoire of substance addiction prevention plays, and the Phoenix Tales Recovery Storytelling Project, whose workshop series uses collaborative dramatic activities to develop solo performances for purposes of recovery advocacy, each use different collaborative theatre processes to develop peer leaders in substance addiction recovery processes, using public performance to de-stigmatize substance addiction recovery. This study examines the ways that people in recovery from substance addiction, engaged with these two projects, make sense or meaning and understand the impact of theatre participation on their mental health and well-being in long-term recovery processes.

Dani Snyder-Young, Co-PI
Alisa Lincoln, Co-PI
Ashley Houston, Population Health PhD Candidate
Atsushi Matsumoto, Postdoctoral Fellow
Francesca Korte, Population Health PhD SGA
Meghann Perry, Pheonix Tales Recovery Storytelling
Maren Fless, Health Equity Intern
Grace Carolonza, Health Equity Intern
Anecia Akeen, Undergraduate Research Assistant
Improbable Players, Collaborating Community Partner
Phoenix Tales Recovery Storytelling, Collaborating Community Partner

How Effective are Active Video Games? A Meta-Analysis Across the Lifespan in Clinical and Non-clinical Populations

Funder: IHESJR Advancing Health Equity Pilot Awards and Deans’s Office of College of Arts, Media and Design

Using the meta-analytic procedure, we will obtain valid estimates of the effects of active games and virtual reality both across population groups as well as across the lifespan in both clinical and non-clinical settings. Our findings may provide more accurate insight to public health researchers as well as practitioners to maximize the potential of AVGs for a broader population which could potentially benefit from them.

Amy Lu, PI
Dar Alon, Research Assistant
Caio Sousa, Postdoctoral Research Assistant
Kelly Lee, Undergraduate Research Assistant

Racial/Ethnic Disparities in Lung Cancer Screening Potentially Due to Current Screening Guidelines

Funder: IHESJR Advancing Health Equity Pilot Awards
This project investigates racial/ethnic disparities in lung cancer screening among adults aged 55 to 80 years old. Specifically, to compare lung cancer screening rates among adults eligible for lung cancer screening (with a 30 pack-years smoking history) and those who do not meet the smoking eligibility criteria (with 20-29 pack-years smoking history).

Hermine Poghosyan, PI

(Not) All In: Race, Ethnicity, Immigration, Exclusion, and Health Care in America’s City on a Hill

Funder: IHESJR Advancing Health Equity Pilot Award

This research project examines the impact of changing health and immigration policies on immirgrants’ healthcare access.

Tiffany Joseph, PI
Micahiah Parker, Health Equity Intern

Mental Health Outcomes Among US Healthcare Workers Exposed to COVID-19

Funder: IHESJR Advancing Health Equity Pilot Awards

This project aims to characterize the mental and emotional distress among frontline healthcare workers

caring for patients with COVID-19.

Kara Pavone, PI
Maria van Pelt, Co-I

Evaluation of the Massachusetts Early Childhood Comprehensive Systems Impact Project

Funder: Subcontract from MA Department of Public Health, funded by Health Resources and Services Administration, Maternal and Child Health Bureau (HRSA)

The goals of this project were to evaluate Massachusetts Department of Public Health (DPH) efforts to increase developmental skills among 3-year old children in Chelsea and Springfield, and to develop a state-level early childhood data system to track child developmental health indicators. Process evaluation methods were utilized to track progress and provide feedback to the implementation team to make improvements.

Beth Molnar, PI
Daphney Mirand, Project Manager
Sameera Nayak, Population Health PhD Candidate
Shurobhi Nandi, Health Equity Intern

Promoting Physical Activity among Preschool Children with Autism Spectrum Disorder: Expanding the Capacity of Teachers and Caregivers to Engage Children in Active Play

Funder: Pottstown Area Health and Wellness Foundation

The purpose of this collaborative project with Better Kid Care at Penn State University is to update and expand the WE PLAY-Autism online training, migrate it to the Better Kid Care online platform for wide dissemination, and to conduce a program evaluation of the updated intervention.

Jessica Hoffman, PI

Urban Form Impact

Funder: Northeastern University’s Provost’s Office

This project seeks to understand correlates of built environment features and demographics to climate change events. By spatially analyzing the extents of flooding, extreme heat, and wildfires, the research team will examine the characteristics of density, housing stock, and urban landscape as well as dimensions of

race and income in those areas most affected.

Sara Jensen Carr, Co-PI
Jay Cephas, Co-PI
Sharon Harlan, Mentor

Exploring New Measures of the Affordability of Healthcare for Patients in Medicare

Funder: NIH NIA

Patient out-of-pocket costs pose a potential barrier to the use of needed medical services and risk to the health and well-being of individuals, particularly among vulnerable populations such as elderly persons with limited financial resources or multiple chronic conditions. This study will conduct comprehensive analyses of newly available federal survey measures of medical cost burden (e.g., going into debt to pay for care) and cost-related underuse (e.g., delaying needed care due to costs) among Medicare enrollees. Once established, these data will form a foundation for future research that will be able to monitor impacts of new policy approaches aimed at improving quality and efficiency of health care delivery within Medicare.

Jeanne Madden, PI
Becky Briesacher, Co-I
Fang Zhang, Co-I, Harvard Medical School
Alison Galbraith, Co-I, Harvard Medical School
Dennis Ross-Degnan, Consultant, Harvard Medical School
Steve Soumerai, Consultant, Harvard Medical School
Jerry Gurwitz, Consultant, University of Massachusetts
Farrah Nekui, Doctoral Research Student
Parthwish Shetty, Master Student Analyst
Susmitha Bayapureddy, Master Student Analyst
Shivangi Vashi, Master Student Analyst
Sai Nukala, Master Student Analyst

BRCA Communities in the Pandemic: Exploring the Role of Online Peer Support

Funder: IHESJR Advancing Health Equity Pilot Award

This project examines the role that online peer support groups have within people living with BRCA I and II during the COVID-19 pandemic.

Linda Blum, PI
KJ Surkan, Co-PI, MIT
Liz Mariluz, Health Equity Intern

Prevent Depression of Chinese-American Adolescents through a Mobile Health Application

Funder: NIMHD, R21 (Exploratory/Developmental Research Grant)

Chinese American adolescents (CAAs), traditionally perceived as a model minority (i.e., smart, diligent, quiet), experience serious acculturative stress and depression coupled with cultural barriers to care and racial/cultural discrimination, facing a major mental health disparity. This proposal addresses the disparity by developing a new mobile health application for CAAs to provide a culturally tailored, personalized, interactive, accessible, and economical depression prevention. The app will be highly scalable and easily adaptable for other minority groups.

Chieh Li, PI/PD
Huijun Li, PI, Florida A&M
Shengli Dong, PI, Florida State University
Edward Hirsch, Co-I
Alisa Lincoln, Co-I
Justin Chen, Consultant, Psychiatrist, Massachusetts General Hospital and Harvard Medical School
John Torus, Consultant, Psychiatrist and Mental Health App Experts, Beth Israel Deaconess Medical Center and Harvard Medical School

Understanding Racial/Ethnic Disparities in Preterm Birth: A Systems Science Approach

Funder: NIH-NIMHD

The goal of this project is to address significant gaps in our understanding of how structural and intermediary determinants of health interact and function interdependently to generate and perpetuate racial/ethnic preterm birth disparities, as well as inform strategies to address these disparities.

Collette N. Ncube, PI
Alisa Lincoln, Joint Primary Mentor
Daniel Kim, Joint Primary Mentor
Hazhir Rahmandad, Co-Mentor, MIT
Daniel Enquobahrie, Co-Mentor, University of Washington
Karen Freund, Co-Mentor, Tufts University
Lorraine Lacroix-Williamson, Doctoral Student Research Assistant

Emotional Well-Being and Access to Blue and Green Spaces Among Teens in Boston-Area Communities

Funder: IHESJR Advancing Health Equity Pilot Award and CSSH RDI

A growing body of literature suggests that exposure to blue and green spaces is beneficial for a range of health outcomes. Research on green spaces and health has documented positive effects on a variety of health outcomes, including lower overall mortality, lower cardiovascular disease risks, improved birth outcomes, increased physical activity, decreased obesity, and improved mental health and emotional well-being. A major limitation of this research however, is that it has focused either on adults or on very young children; teen voices have been largely ignored. We are piloting methods to assess exposure to green and blue spaces and explore how these recreational amenities are associated with mental health among teens in two Boston-area neighborhoods.

Laura Senier, PI
Alisa Lincoln, Co-I
Madeleine Scammel, Boston University School of Public Health
Ramya Kumar, Health Equity Intern
Syliva Wise, Health Equity Intern
Mollie Harmon, Health Equity Intern
Pragnya Kalindi, Health Equity Intern

Evaluation of Boston FIRST SOC (Family Independence, Resilience, Support, and Treatment Systems of Care)

Funder: SAMSHA, subcontract from Boston Public Health Commission

The Boston Family Independent, Resilience, Support and Treatment System of Care (FIRST SOC) project began in October 2019 and expands the LAUNCH/MYCHILD model (www.ecmhatters.org) previously developed and evaluated by this team to a novel setting. The direct-service goal of FIRST SOC is to improve access to high-quality, culturally competent, evidence-based behavioral health services through an innovative Family Partner/Clinician service model for children age 0-48 months and their families in Boston who are involved with the child welfare system. The evaluation study is being led by researchers at the Institute of Health Equity and Social Justice Research at Northeastern University. Impacts of the intervention on social, emotional and behavioral health of the children and on their caregivers (foster families, birth parents, case workers) will be measured over time, as will the development and improvement of systems for

the care of young children with behavioral health needs in Boston, Massachusetts.

Beth Molanr, PI
Daphney Mirand, Project Manager
Sameera Nayak, Population Health PhD Candidate
Thomas Carpenito, Doctoral Research Assistant
Marina Yamada, Undergraduate Capstone Student
Andie Oates, Undergraduate Capstone Student
Amy Kelleher, Health Equity Intern
Shurobhi Nandi, Health Equity Intern
Kayla Anderson, Health Equity Intern

Transitions to Adulthood Amid the Pandemic and Its Aftermath: a Longitudinal Study

Funder: Northeastern University’s College of Social Sciences and Humanities RDI

This project examines the impact of COVID-19 on the transitions of people going into adulthood.

Linda Blum, PI
Kaitlyn Eri Lee, Undergraduate Research Assistant

Resilience Building in Schools Serving Economically Disadvantaged Children Under COVID-19: An Examination of Systems Level Efforts

Funder: Spenser Foundation

Results of this study will illuminate how schools serving economically disadvantaged and minoritized children in such unprecedented large-scale and prolonged adversity confronts challenges, and builds resilience as a system. This study will be one of the first to investigate resilience building under COVID-19 from an integrated school-systems perspective. Although this is a qualitative case study, the lessons learned will help reveal the systems processes in a school that facilitate resilience in a digital era and inform school interventions, policy making, and future research.

Hong Ni, PI, California State University
Chieh Li, Co-PI
Bonnie Nastasi, Consultant on qualitative research, Tulane University

Evaluation of the Vicarious Trauma Resource Initiative

Funder: Office for Victims of Crime, subcontract from International Association of Chiefs of Police

The Vicarious Trauma Response Initiative (VTRI) is a training and technical assistance (T/TA) initiative to assist organizations where the occupational challenge of vicarious trauma, or the hearing of stories of victimization of people served, affects employee and organizational health. There are 12 community implementation sites throughout the country that are establishing and executing community-based approaches that buffer and mitigate the negative effects of vicarious trauma. The VTRI team is providing T/TA to participating organizations in each site, and the Northeastern team is evaluating the progress via survey research with employees at each organization and among their leadership.

Beth Molnar, Evaluation PI
Daphney Mirand, Project Manager
Samantha Meeker, Doctoral Research Assistant
Benchize Fleuraguste, Nursing PhD Student
Vivian Wilt, Graduate Research Assistant
Theres Alezander, Health Equity Intern
Katherine Baker, Health Equity Intern

Immersive Virtual Reality for Visuospatial Assessment in Children with CP

Funder: American Academy of Cerebral Palsy & Developmental Medicine

This project aims to develop a new VR measure of visuospatial abilities in children with Cerebral Palsy (CP)

Danielle Levac, PI
Minxin Chang, Doctoral Research Assistant

First Episode Psychosis Strategic Plan

Funder: MA Department of Mental Health

Working with DMH, the team is conducting focus groups with youth, caregivers, and providers in order to develop the states’ strategic plan for people experiencing their first episode of Psychosis.

Alisa Lincoln, PI
Atsushi Matsumoto, Graduate Research Assistant
Alyssa Pascoe, Health Equity Intern

The Social Construction of Legal Exclusion in Indian Slums

Funder: NSF

This study employs a mixed-methods, qualitative research strategy and a community-based participatory research (CBPR) approach to explain how legal exclusion is constructed in Kaula Bandar, a non-notified settlement of 12,000 people in Mumbai, India.

Liza Weinstein, PI, Northeastern University
Ramnath Subbaraman, Co-PI, Tufts University School of Medicine
Anita Patil-Deshmukh, Co-PI, Partners for Urban Knowledge, Action, and Research (PUKAR), Mumbai India
Saloni Dev, Graduate Student Assistant, Northeastern University

Developing Firearm Suicide Prevention Programs Tailored to Gun Owner Population Subgroups

Funder: American Foundation for Suicide Prevention, Subcontract from Boston University School of Public Health

Dr. Alisa Lincoln is collaborating with Dr. Craig Ross from Boston University School of Public Health to determine population specific suicide prevention strategies. This study is designed to (a) identify subgroups of gun owners through Latent Class Analysis, who share similar attributes and similar suicide risk profiles and then (b) conduct qualitative research with the subgroups to explore barriers and facilitators to the development of targeted firearm suicide prevention programs that can be adopted by each subgroup.

Craig Ross, PI, Boston University
Alisa Lincoln, PI
Suzanne Garverich, Program Manager
Jaimie Gradus, Boston University
Michael Siegel, Boston University
Kevin Carvalho, Research Assistant
Gemma McFarland, Doctoral Research Assistant
Aiden Baglivo, Health Equity Intern
Julia Denlinger, Health Equity Intern
Dorian Stump, Health Equity Intern
Ad Farmer, Health Equity Intern
Madeline Gully, Health Equity Intern

Faculty Innovations in Diversity and Academic Excellence Grant. Promoting Intersectional, Ongoing, Equitable Exchanges around Racism (PIONEER).

Funder: Northeastern University Office of Institutional Diversity and Inclusion

This project is part of OIDI's faculty innovations grant. Dr. Glowcki is chair of the Department of Health Sciences' Social Justice Steering Committee and this grant is used to create a peer support group for students from marginalized and/or historically op-

pressed backgrounds. A leadership council was founded: the Health Scholars for Social Justice, a group of undergraduate students interested in providing support for their peers and thinking about social justice in the Health Sciences' curriculum more broadly.

Elizabeth Glowacki, PI
Emily Grilli-Scott, Co-I
Sameera Nayak, Co-I
Holly Jimison, Co-I

For more information on the research being done at the Institute for Health Equity and Social Justice Research, please visit our website at <https://bouve.northeastern.edu/institute-for-health-equity-and-social-justice-research/>

FACULTY HIGHLIGHTS

Awards

The LAUNCH/MYCHILD Model Practice, received an Innovation Hub Award for being the highest scoring Best Practice submission from the Association of Maternal and Child Health Programs (AMCHP) at their annual conference in 2021. It was officially included in the AMCHP Innovation Station Database as a Best Practice as of June 2020. **Dr. Beth Molnar**, IHESJR Director of Violence Prevention and Trauma Studies, and her research team have been evaluating the LAUNCH/MYCHILD Model Practice since 2012.

Tiffany Joseph, IHESJR Faculty Scholar received Honorable Mention from the American Sociological Association's International Migration Public Sociology Award, International Migration Section.

Elizabeth Glowacki, IHESJR Faculty Scholar received the Bouvé College of Health Sciences Distinguished Educator Award.

Jordon Bosse, IHESJR Faculty Scholar was named a Humanities Center Fellow for AY 2021-2022.

In the Press

Hermine Poghosyan, IHESJR Faculty Scholar's research was in Bouvé College of Health Sciences News. *Despite the Stigma, Cancer Patients Look to Cannabis for Relief 2021*

Sara Jensen Carr, IHESJR Faculty Scholar was mentioned Bloomberg City Lab. *How Fear of Disease Transformed Boston's Swampy Back Bay.*

Chieh Li, IHESJR Faculty Scholar's collaborative work was in Northeastern News. *English Learners in Public School Classrooms are Often Left Behind, What Can Help Them Catch Up?*

Elizabeth Glowacki, IHESJR Faculty Scholar authored a blog post, *Public Memory and Art: Opportunities for Depicting COVID-19 Inequities*, for the student group HERE4Justice, run by MPH students at Simmons University.

Beth Molnar was interviewed by NBCBoston in the newsstory, *Autopsy Results Reveal NH Boy Died of Violence, Neglect, Fentanyl Intoxication.*

Meryl Alper, IHESJR Faculty Scholar was part of several podcast episodes: *The Good Robot*, *One World One Network*, and *Critical Technology*

CELEBRATIONS!

We were so thrilled to be able to have an in-person end of the year celebration this year! It was a time of being mostly remote for 2 years that we, as an Institute community were able to come together to celebrate all of the accomplishments of our students, staff, and faculty. We gathered in one of the Northeastern University Tents where we were able to meet people in-person for some of us the first time, and have a time where we could meet all of our members of our ever growing Institute. This event was made possible by the support of the Institute Director, Alisa Lincoln and the Sunshine Committee members: Tiana Yom, Suzanne Garverich, Makiya Polk, Vela McBride, and Krystal Abbott.



(left to right: Alisa Lincoln, The Sunshine Committee: Suzanne Garverich, Tiana Yom, Makiya Polk, Vela McBride, Krystal Abbott)



Institute Faculty, Staff and Students enjoyed lunch from the local Black-owned business, Darryl's Corner Bar and Kitchen, as well as had time to socialize with various members of the community. We also participated in an icebreaker where we played bingo. Fun was had by all!



At the spring celebration, we asked the Institute community for one word that comes to mind when they think of the Institute. To the left is the word cloud that has been created of all the responses.

Co-op Students!

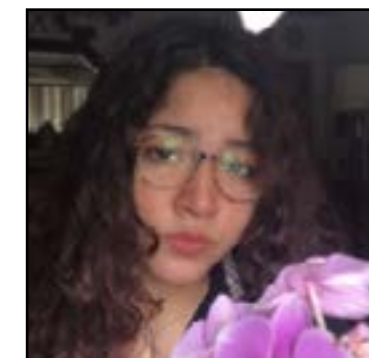
From the support of the Bouvé College of Health Science's Dean's Office, the IHESJR is able to have a Co-op student every 6 months who supports the administration and research that is done at the Institute. We have been so lucky in having amazing students each Co-op period. We thank each one of you, especially during times of COVID-19 where many of you spent your time remotely.



Krystal Abbott



Isabelle Joy Carrillo



Lissett Lazcano-Rodriguez



Aniyah Travis

CONGRATULATIONS GRADUATES!

We want to highlight the amazing accomplishments of our Institute students of all levels: doctoral, masters, and undergraduates during these past two years. They have all worked so hard during their time at Northeastern University. We also wanted to thank each one of them for all of their work they have put into the research we do at the Institute.

Doctoral Graduates

Alexandra Alden, Sociology PhD Program, College of Social Sciences and Humanities
Saloni Dev, Population Health PhD Program, Bouvé College of Health Sciences
Ashley Houston, Population Health PhD Program, Bouvé College of Health Sciences
Sameera Nayak, Population Health PhD Program, Bouvé College of Health Sciences
Arielle Scoglio, Population Health PhD Program, Bouvé College of Health Sciences
Tiana Yom, Health and Behavior Studies, Health Education Ed.D Program, Columbia University
Megan Zelinsky, Population Health PhD Program, Bouvé College of Health Sciences

Master Graduates

Kaleem Ahmid, Masters in Public Health, Bouvé College of Health Sciences
John Dalton, Masters in Public Health, Bouvé College of Health Sciences
David Mejia Cruz, Masters in Public Policy, College of Social Sciences and Humanities
Zoe Harris, Masters in Public Health, Bouvé College of Health Sciences
Alissah Sillah, Masters in Public Health, Bouvé College of Health Sciences
Taylor Smith, Masters in Public Health, Bouvé College of Health Sciences
Olivia Sterns, Masters in Public Health, Bouvé College of Health Sciences
Vivian Wilt, Masters in Public Health, Bouvé College of Health Sciences



Kaleem Ahmid, MPH



Arielle Scoglio, PhD



Tiana Yom, Ed.D.



John Dalton, MPH



Alissah Sillah



Sundos Al-Husayni



(left to right: Ashley Houston, PhD, MPH, Alisa Lincoln, PhD, Megan Zelinsky, PhD)

Bachelor Graduates

Elena Abatzis, COS
Nur Selin Akbulut, COS
Sundos Al-Husayni, Bouvé
Theres Alexander, COS
Emily Alves, Bouvé
Elizah Becker, Bouvé
Michael Cullen Bober, Bouvé
Julia Denlinger, Bouvé
Jacob Farmer, CSSH
Mason Fitzpatrick, DMSB
Maren Flessen, CAMD
Maisha Gregory, Bouvé
Rayna Haque, Bouvé
Sinead Hassan, Bouvé
Lindsey Immers, Bouvé
Meghna Iyers, Bouvé
Jorja Kahn, COS
Christina Khalil, COS
Winnie Li, Bouvé
Ecom Lu, Bouvé
Jennifer Magana, Bouvé
Allison McLaughlin, Bouvé
Sabrina Meyer, Bouvé
Andie Oates, Bouvé
Michaiah Parker, Bouvé
Alyssa Pascoe, CSSH
Nihala Razack, Bouvé
Mia St. Angelo, DMSB
Oliva Sterns, Bouvé
Dorian Stump, Bouvé
Aniyah Travis, Bouvé
Kyle Willette, Bouvé
Sophie Wiltshire, Bouvé
Marina Yamada, Bouvé
Yechan Yang, COS
Tiffany Yang, Bouvé
Claire Yu, Bouvé

ACHIEVEMENT HIGHLIGHTS

Sameera Nayak (Student Graduate Assistant) was selected as Communication Chair for the APHA International Health Student Committee

Huntington 100 IHESJR Students (2021 and 2022)

Anisa Amiji
Kaleem Ahmid
Catherien Di Gangi
Tyreke Gaston

Rayna Haque
Alexander Kane
Ramya Kumar
Meghna Iyer

Winnie Li
Jeanine Nasser
PhiYen Nguyen
Shreya Shetty

Debby Nguyen (former Health Equity Intern) published, *Pills, Teas, and Songs: Stories of Medicine Around the World*. Her book is about the research practice among other cultures and medicine across the globe.

Kaitlyn Eri Lee and **Liz Mariluz** presented in the CSSH Undergraduate Research Forum in March 2021 and were supported by Faculty Scholar, Dr. Linda Blum

Academic Excellence Awards

Taylor Smith (Health Equity Intern) won the Outstanding Capstone Project Award

Connor Holmes (Health Equity Intern) won the Harold D. Hodgkinson and Fulbright awards.

Zoe Harris (Health Equity Intern) won the Outstanding Graduate Student Award

Dr. Tiana Yom, Program Director of the Northeastern University Public Evaluation Lab (NU-PEL), was selected to receive an Outstanding Teaching Award for the College of Social Sciences and Humanities.

Sameera Nayak, an Institute SGA working with Dr. Beth Molnar, and PhD Candidate in the Population Health PhD program, has been selected to receive the 2022 Outstanding Student Teaching Award from Northeastern University.

Population Health PhD student **Lorraine Lacroix-Williamson** has been named a Fellow of the Fostering Diversity in HIV Research program at Massachusetts General Hospital and Harvard T.H. Chan School of Public Health. She was a recipient of the 2021 Race & Sexuality Research award from the Center of Positive Sexuality.

Population Health PhD candidate **Sameera Nayak** was awarded a research seed grant from the Boston Area Research Initiative (BARI) for her dissertation study as well as the Northeastern University Dissertation Completion Fellowship.

Sociology PhD candidate **Alexandra Alden** was awarded a Dissertation Completion Fellowship.

IHESJRS Affiliated Publications and Presentations 2020-2022

Abayomi, A., Balogun, M.R., Bankole, M., Banke-Thomas, A., Mutiu, B., **Olawepo, J.O.**, Senjobi, M., ... & Ogunsola, F. (2021). From Ebola to COVID-19: Emergency preparedness and response plans and actions in Lagos, Nigeria. *Globalization and Health*, 17(1), 79. <https://doi.org/10.1186/s12992-021-00728-x>.

Adams W., & Lincoln A. (2021). *Barriers and Facilitators to Implementing Peer Support for Criminal Justice-Involved Individuals*. *Psychiatric Services*

Agrest, M. Alves-Nishioka, S., Le, P.T. D., Dishy, G., Kankan, T., **Dev, S.**, Mascayano, F., Dahl, C., Vera San Juan, N., Abadi, D., Whitley, R., Tavares-Cavalcanti, M., Valencia, E., Alvarado-Muñoz, R., Yang, L.H., Susser, E. (2021). Utility of a multidimensional recovery framework in understanding lived experiences of Chilean and Brazilian mental health service users. *Revista Iberoamericana de Psicología*. 14(2).

Alon, D., Sousa, C. V. & **Lu, A. S.** (2021) *What type of body shape moves children? An exploratory study of the impact of narrative cartoon character body shape on children's narrative immersion, engagement, wishful identification, and exercise motivation*. [Paper presented]. Mass Communication Division at the International Communication Association 2021 Convention.

Alon, D., Sousa, C. V., & **Lu, A. S.** (2021) What type of body shape moves children? An experimental exploration of the impact of narrative cartoon character body shape on children's narrative engagement, wishful identification, and exercise motivation. Forthcoming at *Frontiers in Psychology*.

Alper, M. (2020). Improving research on screen media, autism, and families of young children. *JAMA Pediatrics*, 174(12), 1223.

Alper, M. (2020, October). *Parenting digital youth on the spectrum during the pandemic. Ask the experts: Screens, students, and ASD*. [Presentation]. Children and Screens: Institute of Digital Media and Child Development, Cold Spring Harbor, NY [virtual].

Alper, M. (2020, October 27). The silver lining of virtual school for some autistic students. *Slate*. available at <https://slate.com/technology/2020/10/virtual-school-autistic-students-social-life.html>

Alper, M. (2021). Critical media access studies: Deconstructing power, visibility, and marginality in mediated space. *International Journal of Communication*, 15, 840-861. Available at: <https://ijoc.org/index.php/ijoc/article/view/15274>.

Alper, M. (2021). U.S. parent perspectives of media guidance from pediatric autism professionals. *Journal of Children and Media*, 15(2), 165-182. doi:10.1080/17482798.2020.1736111.

Alper, M. (2021, January). *Creating inclusive children's media for autism and neurodiversity* [Presentation]. PBS KIDS, Arlington, VA [virtual]

Alper, M. (2021, February). *Maximizing the participation of children on the autism spectrum in research* [Presentation]. PBS KIDS, Arlington, VA [virtual].

Alper, M. (2021, March). *Critical media access studies: Examining the benefits and limits of accessibility in mediated spaces* [Presentation]. Department of Communication, University of Connecticut, Storrs, CT [virtual].

Alper, M. (2021, March). *Critical media access studies: Examining the benefits and limits of accessibility in mediated spaces* [Presentation]. Dis-/Abilities and Digital Media, German Research Foundation (DFG) Scientific Network. University of Konstanz, Konstanz, Germany [virtual].

Alper, M. (2021, March). *Only a mother's touch(screen): The materiality of maternal labor and assistive technology. Explorations in the medical humanities: Parenting in pandemic* [Presentation]. The Society of Fellows and Heyman Center for the Humanities. Columbia University, New York, NY [virtual].

Alper, M. (2022, May). *"Can we be friends? on social media": A qualitative study of autistic children's friendships in the digital age*. International Communication Association, Children, Adolescents and Media Division, Paris, France [virtual].

Alper, M. (2021, December). *Advancing digital and educational equity for autistic youth*. Aspen Institute Virtually Human Working Group [virtual].

Alper, M., & Irons, M. (2020). Digital socializing in children on the autism spectrum. In L. Green, D. Holloway, L. Haddon, K. Stevenson, & T. Leaver (Eds.), *Routledge companion to children and digital media* (pp. 348-357). London, UK: Routledge.

Alper, M., Jennings, N., & Caplovitz, A. (2021, May). *Children living with chronic illness, disability, and the media during the coronavirus crisis* [Presentation]. International Communication Association, Children, Adolescents and Media Division [virtual].

Alper, M., Mello, S., & Allen, A. A. (2021, May). *Doctors' orders: Examining pediatric media guidance topics and correlates in the context of autistic children* [Presentation]. International Communication Association, Children, Adolescents and Media Division [virtual].

Altindag, O., **Erten, B.**, & Keskin, P. (2020). Mental health costs of lockdowns: Evidence from age-specific curfews in Turkey. Available at SSRN: <https://ssrn.com/abstract=3765838>. doi/10.2139/ssrn.376583.

Barlas, N., Sidhu, J., & **Li, C.** (2021). Can social-emotional learning programs be adapted to schools in Pakistan? A literature review. *International Journal of Educational and School Psychology*. doi:10.1080/21683603.2020.1850374.

IHESJRS Affiliated Publications and Presentations 2020-2022

Batra, K., Pharr, J., **Olawepo, J.O.**, & Cruz, P. (2020). Understanding the multidimensional trajectory of psycho-social maternal risk factors causing preterm birth: A systematic review. *Asian Journal of Psychiatry*. doi/10.1016/j.ajp.2020.102436

Bosse, J.D., Dion, K., Campbell-Galman, S., & Chiodo, L. (2021). *Perceived acceptance-rejection from family members and suicidality in transgender young adults*. American Public Health Association Annual Meeting and Expo, Boulder, CO.

Borges, G., Benjet, C., Orozco, R., Medina-Mora, M.E., Mendez, E., & **Molnar, B.E.** (2021) Traumatic life-events and suicidality among Mexican adolescents as they grow up: A longitudinal community survey. *Journal of Psychiatric Research*, 142, 171-178.

Bosse, J.D., Dion, K., Campbell-Galman, S., & Chiodo, L. (2022). *Perceived acceptance-rejection from family members and suicidality in transgender young adults*. Eastern Nursing Research Society 34th Annual Scientific Session, Providence, RI.

Bosse, J.D., Hoffman, K.A., Korthuis, P.T., McCarty, D., Levander, X.A., Chan, B., & Martin, S.A. (2021). *Perceived Usability of a Mobile App to Deliver Telehealth-Based Medication Treatment for Opioid Use Disorder*. Association for Multidisciplinary Education and Research in Substance use and Addiction Annual Conference.

Bosse, J.D., & Jackman, K. (2022). *The Path to Health Equity and Inclusion for Sexual and Gender Minority Populations through Nursing Science*. Eastern Nursing Research Society 34th Annual Scientific Session, Providence, RI.

Briesch, A.M., Coddling, R.S., **Hoffman, J.A.**, Rizzo, C.J., & Volpe, R.J. (2021). Caregiver perspectives on schooling from home during the spring 2020 COVID-19 closures. *School Psychology Review*, 50 (4), 546-559. DOI: 10.1080/2372966X.2021.1908091.

Canning, A.G., Watson, K., McCreedy, K.E., & **Olawepo, J.O.** (2022). The ethics and effectiveness of U.S. COVID-19 vaccine mandates and vaccine passports: A review. *Journal of Research in Health Sciences*. doi:10.34172/jrhs.2022.xx.

Cantu, C., **Crookes, D.M.**, & Suglia, S.F. (2022). Examining the impact of the cultural gap narrative on family functioning and youth substance use among the HCHS/SOL Youth population. *Journal of Immigrant and Minority Health*. <https://doi.org/10.1007/s10903-022-01350-8>.

Carr, S.J., (2020). Uncertain space: Data illusions and the chorography of chronic disease. *Projections Vol. 15: Practices of health in unruly environments*. *Journal of Massachusetts Institute of Technology Department of Urban Studies and Planning*, MIT Press.

Carr, S.J. (2020, June 19). *Green spaces, public health and race* [In conversation with Catherine Morris]. Emerald Necklace Conservancy, Boston, MA.

Carr, S.J. (2020, July 14). *Progressivism and purified air: Frederick Law Olmsted's living machines* [Presentation]. Prospect Park Alliance, Brooklyn, NY.

Carr, S.J. (2020, July 20). *Designing the future: In the wake of our pandemic crisis* [Panelist]. AIA, Los Angeles, CA.

Carr, S. J. (2020, October 15). *Embodied environments* [in conversation with Michael Murphy of MASSDesign]. Massachusetts Institute of Technology School of Architecture Lecture Series, Cambridge, MA.

Carr, S.J. (2020, November 6). *The geography of the post-pandemic city* [Presentation]. Princeton-Mellon Urban Forum [virtual].

Carr, S.J. (2021, January 28). *Pandemic resilience: Learning from health challenges in history* [Roundtable presentation]. Reimagine New York Commission Roundtable, New York., NY

Carr, S.J. (2021, February 25). *Embodied environments* [Presentation]. University of Massachusetts Amherst Zube Lecture Series, Amherst, MA.

Carr, S.J. (2021, March 17). *The topography of wellness: How health and disease shaped the American landscape* [Presentation]. University of Virginia School of Medicine Lecture Series, Charlottesville, VA.

Carr, S.J. (2021, April 29). *The topography of wellness: How health and disease shaped the American landscape* [Presentation]. Preservation Society of Newport County, Newport, RI.

Carvalho, K., Garverich, S., Bass, B., Pierce, D., Strong, G., Zimmerman, J. Baglivo, A., Stump, D., & Lincoln, A. (November 2021). *Gaining an understanding of the perspectives of firearm owners to develop and implement effective suicide prevention strategies*. Poster Presentation at American Public Health Association Annual Conference (virtual).

Catalano, R., Karasek, D., Bruckner, T., Casey, J. A., Saxton, K., **Ncube, C. N.**, Shaw, G., Elser, H., & Gemmill, A. (2021). African American unemployment and the disparity in periviable births. *Journal of Racial and Ethnic Disparities*, 1-9. doi: 10.1007/s40615-021-01022-7.

Cheng, M., Anderson, M., & **Levac, D.E.** (2021, March 15). Performance variability during motor learning of a new balance task in a non-immersive virtual environment in children with hemiplegic cerebral palsy and typically developing peers. *Frontiers in Neurology*. <https://doi.org/10.3389/fneur.2021.623200>.

IHESJRS Affiliated Publications and Presentations 2020-2022

Crookes, D.M. (2022, May). *Sociopolitical drivers of immigrants health in the USA as part of Public health: How do we translate evidence into health equity?* Invited panel speaker at the Boston Area Research Initiative (BARI) Conference, Boston, MA.

Crookes, D.M., Lemon, E.D., Sainz, M., Del Carmen Chacan, L., & Woods-Jaeger, B. (2021, October). *Perceived statewide policy climate, local immigration enforcement, and the mental health of Latinx immigrants in Georgia*. Oral presentation at the Interdisciplinary Association for Population Health Science Annual meeting, Baltimore, MD.

Crookes, D.M., Stanhope, K.K., & Suglia, S.F. (2022). A systematic review of immigrant-related policies and the health outcomes of Latino adults in the United States. *Epidemiology*. doi:10.1097/EDE.0000000000001480.

Crookes, D.M., & Young, M.E. (2022, April). *Measuring the complex state-level sociopolitical environment faced by Black immigrants in the United States*. Oral presentation at the Population Association of American Annual meeting, Atlanta, GA.

Davis, M. F., **Senier, L.**, & Harlan, S. (2020). *The rising cost of household tap water: Just sustainability in twelve Massachusetts communities*. [Roundtable presentation]. American Sociological Association Annual Meeting, San Francisco, CA [virtual].

Dennerlein, J.T., **Eyllon, M.**, **Garverich, S.**, Weinstein, D., Manjourides, J., Vallas, S., & **Lincoln, A.K.** (2021). Associations between work-related factors and psychological distress among construction workers. *Journal of Occupational and Environmental Medicine*, 63(12), 1052-1057. DOI: 10.1097/JOM.0000000000002311.

Dev, S., Griffith, J., Ncube, C., Patel, V., **Lincoln, A.** (2021). *Evaluating the Impact of Implementation Factors on Mental Health Outcomes within Task Sharing: A Causal Analysis*. Oral presentation at the American Public Health Association's Annual Meeting, Denver, CO.

Dev, S.*, Kankan, T.*, Blasco, D., Le, P.D., Agrest, M., Dishy, G., Mascayano, F., Schilling, S., Jorquera, M.J., Dahl, C., Cavalcanti, M.T., Price, L.N., Conover, S., Yang, L.H., Alvarado, R., Susser, E.S. (2021). Adapting a Community-Based Psychosocial Intervention for Individuals with Psychosis in Latin America: A Comparative Analysis of Implications for Implementation from the Perspectives of Users in Chile and Brazil. *Global Mental Health*.

Dev, S., Kim, D. (2021). State-Level Social Capital as a Predictor of County-Level Suicide Rates in the United States: A Lagged Multilevel Study. *Public Health Reports*. doi:10.1177/0033354920976555.

Dev, S., Lincoln, A.K., Shidhaye, R. (2021). *Evidence to Practice for Mental Health Task-Sharing: Understanding Readiness for Change among Accredited Social Health Activists in Sehore district, Madhya Pradesh, India*. Oral presentation at the American Public Health Association's Annual Meeting, Denver, CO.

Dev, S., Lincoln, A.K., Shidhaye, R. (2022). Evidence to Practice for Mental Health Task-Sharing: Understanding Readiness for Change among Accredited Social Health Activists in Sehore district, Madhya Pradesh, India. *Administration and Policy in Mental Health and Mental Health Services Research*.

Eboreime, E.A., **Olawepo, J.O.**, Banke-Thomas, A., Abejirinde, I.O., & Abimbola, S. (2020). Appraising and addressing design and implementation failure in global health: A pragmatic framework. *Global Public Health*. doi: 10.1080/17441692.2020.1814379.

Ellis, B.H., Sideridis, G., Miller, A., Abdi, S.M., & **Lincoln, A.K.** (in-press). Civic development and antisocial attitudes/behaviors among Somali immigrants: Change over one year. *Cultural Diversity and Ethnic Minority Psychology*.

Erten, B. *Mental health costs of lockdowns: Evidence from age-specific curfews in Turkey* [Presentation]. Grand Valley State University, Allendale, MI.

Erten, B. *Mental health costs of lockdowns: Evidence from age-specific curfews in Turkey* [Presentation]. Kadir Has University, Istanbul, Turkey.

Erten, B. *Social distancing, stimulus payments, and domestic violence: Evidence from the U.S. during COVID-19* [Presentation]. AEA Meetings.

Erten, B. (2021). *Social distancing, stimulus payments, and domestic violence: Evidence from the U.S. during COVID-19* [Presentation]. European University Institute, San Domenico di Fiesole, Italy.

Erten, B. (2021). *Social distancing, stimulus payments, and domestic violence: Evidence from the U.S. during COVID-19* [Presentation]. NBER Economics of Caregiving Spring Meeting.

Erten, B., & Keskin, P. (2021). Does knowledge empower? Education, legal awareness and intimate partner violence (No. 14480). *Institute of Labor Economics (IZA)*.

Eyllon, E., Vallas, S.P., Dennerlein, J. T., **Garverich, S.**, Weinstein, D., **Owens, K.**, & **Lincoln, A.K.** (2020). Mental health stigma and well-being among commercial construction workers: A mixed method study. *Journal of Occupational and Environmental Medicine*, 6(2), e423-e430. doi:10.1097/JOM.0000000000001929.

Felmlee, D., **McMillan, C.**, and Whitaker, R. (2021). Dyads, Triads, and Tetrads: A Multivariate Simulation Approach to Uncovering Network Motifs in Social Graphs. *Applied Network Science*, 6(63).

IHESJRS Affiliated Publications and Presentations 2020-2022

Freelin, B.N., **McMillan, C.**, Felmlee, D., & Osgood, D.W. (2021, November). *Changing Contexts: A Quasi-Experiment Adolescent Delinquency and the Transition to High School*. Paper presented at the annual meeting of the American Society of Criminology, Chicago, IL.

Fox, J., Pearce, K.E., Massanari, A.L., Riles, J.M., Szulc, A., Ranjit, Y.S., Trevisan, F., Soriano, C.R.R., Vitak, J., Arora, P., Ahn, S.J., **Alper, M.**, Gambino, A., Gonzalez, C., Lynch, T.L., Williamson, L.D., & Gonzales, A. L. (2021). Open science, closed doors? Countering marginalization through an agenda for ethical, inclusive research in communication. *Journal of Communication*, 71(5), 764-784.

Frew, P.M., Randall, L.A., King, A.R., Schamel, J.T., Spaulding, A.C., HBOU Study Team [**Olawepo, J.O.**], & Holloway, I.W. (2021). Health behavior survey among people who use opioids: Protocol for implementing technology-based rapid response surveillance in community settings. *JMIR Research Protocols*, 10(9), e25575. https://doi.org/10.2196/25575.

Garverich, S., Carvalho, K., Denlinger, J., Stump, D., & Lincoln, A. (May 2022). *Firearm owner perspectives on suicide and suicide prevention: Lessons learned on how to engage the firearm owning community in suicide prevention efforts*. Presentation at the Massachusetts Department of Public Health's Suicide Prevention Conference (virtual).

Genta, P.R., Kaminska, M., Edwards, B.A., Ebben, M.R., Krieger, A.C., Tamisier, R., **Ye, L.**, Weaver, T.E., Vanderveken, O.M., Lorenzi-Filho, G., DeYoung, P., Hevener, W., Strollo, P. (2020). The importance of mask selection on continuous positive airway pressure outcomes for Obstructive Sleep Apnea. An Official American Thoracic Society Workshop Report. *Annals of the American Thoracic Society*, 17(10), 1177-1185. doi: 10.1513/AnnalsATS.202007-864ST.

Hallinan, S., Shiyko, M., Volpe, R., & **Molnar, B.E.** (2021). On the back burner: Challenges experienced by change agents addressing vicarious trauma in first response and victim service agencies. *Traumatology*, 27(3), 316-325.

Hoffman, J.A., Miller, E.A., Burr, J., Mutchler, J.E., Hermelbracht, J., Volpe, R.J., Coddling, R.S., & Briesch, A.M. (2021, November). *Intergenerational Tutoring: Older Adults Supporting Children's Academic Needs via Video Conferencing*. Poster presentation at the 2021 Annual Scientific Meeting of the Gerontological Society of America.

Hoffman, J.A., Schmidt, E.S., Bayly, B., & Cox, J. (2021, August). *Including young children with autism spectrum disorder in active play with peers*. Invited presentation at the Pottstown Area Health and Wellness Foundation's annual Healthy Body, Healthy Mind Institute

Hoffman, J.A., Volpe, R.J., Coddling, R.S., Briesch, A.M., & Trussell, A.M. (2022, February). *Intergenerational Tutoring: Older Adults Supporting Children's Academic Needs*. Paper presentation at the National Association of School Psychologists annual convention, Boston, MA.

Houston, A., Da Fonseca, T., Joseph, T., Lincoln, A. (2022). Challenging Federal Exclusion: Immigrant Safety, Health, and Healthcare Access in Sanctuary Cities. Accepted and forthcoming in *Health and Place*.

Houston, A., Lincoln, A.K., Gillespie, S., **Da Fonseca, T.**, Issa, O., Ellis, B.H., **Salhi, C.** (2021). You Have to Pay to Live: Somali Young Adult Experiences with the U.S. Health Care System. *Qualitative Health Research*. doi: 10.1177/10497323211010159.

Houston, A., Lynch, K., Ostrach, B., Isaacs, Y.S., Nve Diaz San Francisco, C., Lee, J. M., Emard, N., & Proctor, D.A. (2021). United States immigration detention amplifies disease interaction risk: A model for a transnational ICE-TB-DM2 syndemic. *Global Public Health*, 1-20. https://doi.org/10.1080/17441692.2021.1919737.

Houston, A., Salhi C., & Lincoln A. (2021). *Messaging Inclusion with Consequence: U.S. Sanctuary Cities and Immigrant Wellbeing*. The Centre on Migration, Policy and Society (COMPASS) Spring Conference, University of Oxford [virtual].

Iyer, M., Garverich, S., & Lincoln, A.K. Improving Guardrail Damage Reporting and Responding to Promote Injury Prevention in Motor Vehicle Crashes. *Journal of Road Safety* (in press).

Jennings, N., Caplovitz, A.G., & **Alper, M.** (2022). Media use among children with chronic health conditions during the early days of the coronavirus crisis. In M. Gatz & D. Lemish (Eds.), *Children and media worldwide in a time of a pandemic* (pp. 167-180). Peter Lang.

Joseph, T. (2021, September 29). *Racial Inequality in the United States*. Myra Kraft Open Classroom, Northeastern University, Boston, MA.

Joseph, T. (2021, October 9). (Not) All In: Race, Immigration, and Healthcare Exclusion in the Age of Obamacare. Senior Ford Fellowship Plenary Speaker, Ford Foundation Fellowship Annual Meeting [virtual].

Joseph, T. (2022, March 30). *Introduction to (Not) All In: Race, Immigration, and Healthcare Exclusion in the Age of Obamacare*. Boston Area Health Scholars, Boston University, Boston, MA.

Joseph, T. (2022, April 13). *Displacement, Citizenship, and Human Rights Challenges for the 21st Century*. 27th Annual Valerie Gordon Human Rights Lecture, Northeastern University School of Law, Boston, MA.

Joseph, T.D., (2020). Whitening citizenship: Race, ethnicity, and documentation status as brightened boundaries of Exclusion in the U.S. and Europe. In J. Soloes (Ed), *International Handbook of Contemporary Racisms* (Chapter 4). New York: Routledge Press.

IHESJRS Affiliated Publications and Presentations 2020-2022

Joseph, T.D. (2020, July 20). While tackling police reform, don't ignore crucial bills on immigrant rights. *CommonWealth Magazine*. available at <https://commonwealthmagazine.org/criminal-justice/while-tackling-police-reform-dont-ignore-crucial-bills-on-immigrant-rights/>.

Joseph, T. D. (2020, October 14) 2020. *Race-ing Documentation Status: Social Inequality along the Racialized Documentation Status Continuum* [Presentation]. Center for Migration and Development, PIIRS Migration Lab, and Program in Latino Studies, Princeton University, Princeton, NJ.

Joseph, T.D. (2020, November 11). *Race-ing Immigration and Citizenship: Life along the Racialized Documentation Status Continuum*. [Presentation]. Africana Studies and Sociology Departments, Wellesley College, Wellesley, MA

Joseph, T.D. (2021). How the vaccine rollout reveals another failure of U.S. public health: Infrastructure and implications for marginalized populations. *American Sociological Association Footnotes Newsletter*, 29(2). Available at: https://www.asanet.org/sites/default/files/attach/footnotes/footnotes_spring-2021.pdf.

Joseph, T.D., & Golash-Boza, T. (2021). Double Consciousness in the 21st Century: Du Boisian Theory and the Problem of Racialized Legal Status. *Social Sciences*, 10(9), 345. <https://doi.org/10.3390/socsci10090345>.

Karosas, A., **Ye, L.** (in press). Challenges of Contact Tracing in College Students during COVID-19 Pandemic. *Journal of American College Health*.

Le, P.D., Agrest, M., Mascayano, F., **Dev, S.**, Kankan, T., Dishy, G., Tapia-Muñoz, T., Toso-Salman, J., Pratt, C., Alves-Nishioka, S., Schilling, S., Jorquera, M.J., Tapia, E., Castro-Valdez, J., Geffner, N., Price, L.N., Conover, S., Valencia, E., Yang, L.H., Alvarado, R., Susser, E.S. (2021). Understanding Users' Perspectives of Psychosocial Mechanisms Underpinning Peer Support Work in Chile. *Community Mental Health Journal*, 1-10.

Li, C. (2021, March 28). *What can parents do amid Anti-Asian violence?* [Webinar]Chinese Families Network, Chelmsford, MA.

Li, C., Kruger, L., & Abdulkarim, N. (2021, March 19). *Advancing social justice for English learners: Implications for school psychology training*. (LIFE) [Paper presentation]. Annual conference of Trainers of School Psychology: Connecting for Action: Social Justice & Advocacy for the Profession [virtual].

Li, C., Kruger, L., & Abdulkarim, N. (2021). Advancing social justice for English learners: Implications for school psychology training. Special Issue: Training School Psychologists as Social Justice Change Agents. *School Psychology Training and Pedagogy*, 38(1), 54-70. doi: 10.13140/RG.2.2.13733.22249.

Li, W., & **Ye, L.** (2021, June). *Digital Media Use and Sleep in College Students during COVID-19 Pandemic*. [Poster Presentation]. SLEEP, 2021, Associated Professional Sleep Society Annual Research Conference.

Lincoln, A.K., Cardelli, E., Sideridis, G., **Salhi, C.**, Miller, A.B., ***DaFonseca, T.**, Issa, O., Ellis, BH. (in-press). Discrimination, Marginalization, Belonging and Mental Health among Somali Immigrants in North America. *American Journal of Orthopsychiatry*.

Lincoln, AK., Eyllon, M., Prener, C., **Garverich, S.**, Griffith, J., **Adams, W., Arford, T.**, Rosenfeld, L., Nykiel, S., Johnson, P., Guyer-Deason, M., Leung, J.Y., Paasche-Orlow, M. (2021). Prevalence and Predictors of Limited Literacy in Mental Health Care. *Community Mental Health Journal*, 57(6), 1175-1186. doi: 10.1007/s10597-020-00750-0.

Lowery, J. (2022, April). *Area- and location-based determinants of health: Examining care continuity in pediatric obesity* [Presentation]. Pediatric Academic Societies (PAS) Meeting, Denver, CO.

Lu, C.Y., Busch, A.B., Zhang, F., **Madden, J.M.**, Callahan, M.X., LeCates, R., Wallace, J., Foxworth, P., Soumerai, S.B., Ross-Degnan, D., & Wharam, J.F. (2021, May). Impact of high-deductible health plans on medication use among individuals with bipolar disorder. *Psychiatric Services*. doi:10.1176/appi.ps.202000362.

Madden, J.M., Araujo-Lane, C., Foxworth, P., Lu, C.Y., Wharam, J.F., Busch, A.B., Callahan, M.X., Soumerai, S.B., & Ross-Degnan, R. (2021). Healthcare cost-sharing experiences of people with bipolar disorder in employer plans. *Journal of Affective Disorders*, 281, 41-50. doi: 10.1016/j.jad.2020.10.033.

Madden, J.M., Bayapureddy, S., Briesacher, B.A., Zhang, F., Ross-Degnan, D., Soumerai, S.B., Gurwitz, J.H., & Galbraith, A.A. (2020, August). *National prevalence of problems paying medical bills and cost-related delays in care among Medicare enrollees* [Presentation],. AcademyHealth Annual Research Meeting [virtual]. Abstract published in Health Services Research, 2020, 55, pp.97-98.)

Madden, J.M., Foxworth, P., Ross-Degnan, D., Allen, K., Busch, A.B., Callahan, M.X., Lu, C.Y., & Wharam, J.F. (2021). Integrating stakeholder engagement with claims-based research on health insurance design and bipolar disorder. *Psychiatric Services*, 72(2), 186-194. doi: <https://doi.org/10.1176/appi.ps.202000177>.

Madden, J.M., Vashi, S., Shetty, P.S., Zhang, F., Briesacher, B.A., Ross-Degnan, D., Soumerai, S.B., Gurwitz, J.H., & Galbraith, A.A. (2021, June). *The persistence of food insecurity: in Medicare 2016-2019 and year-to-year for individual enrollees* [Poster presentation]. Academy-Health Annual Research Meeting [virtual].

IHESJRS Affiliated Publications and Presentations 2020-2022

Mann, E.A., Gardinier, L., & Abels, M. (2022, April). *Harm Reduction Training (HaRT) Program Evaluation: Year 1 findings*. Life Paths Research Center Resilience Conference, Nashville, TN [virtual].

McMillan, C. (2022). Worth the Weight: Conceptualizing and Measuring Strong versus Weak Tie Homophily. *Social Networks*, 68, 139-147.

McMillan, C. (2021, August). *Strong and Weak Tie Homophily in Adolescent Friendship: An Analysis of Same-Race and Same-Gender Ties*. Roundtable session at the annual meeting of the American Sociological Association, Chicago, IL [virtual].

McMillan, C., Felmlee, D., & Ashford, J.R. (2022). Reciprocity, transitivity, and skew: Comparing local structure in 40 positive and negative social networks. *PLOS ONE*, 17(5), e0267886.

McMillan, C., Felmlee, D., & Ashford, J. (2021, August). *Local Structures in Positive and Negative Social Networks: A Comparison of 40 Graphs*. Paper presented at the annual meeting of the American Sociological Association, Chicago, IL [virtual].

McMillan, C., Felmlee, D., Ashford, J., & Julien, C. (2021, July). *Comparison of Local Structure in Positive and Negative Social Networks*. Poster presented at the Networks conference, Washington, DC [virtual].

McMillan, C., Freelin, B., & Colindres, A. (2021, November). *Moving on up: How social networks and school transitions shape adolescent delinquency*. Paper presented at the annual meeting of the American Society of Criminology, Chicago, IL.

McMillan, C., Kreager, D., & Veenstra, R. (2022). Keeping to the Code: How Local Norms of Friendship and Dating Inform Macro-Structures of Adolescents Romantic Networks." *Social Networks*, 70, 126-137.

McMillan, C., & Schaefer, D.R. (2021). Comparing Targeting Strategies for Network-Based Adolescent Drinking Interventions: A Simulation Approach. *Social Science & Medicine*, 282, 114136.

Meeker, S. (2021, November). *Vicarious Trauma among Emergency Medical Response Professionals: A Systematic Review*. Poster Present at ISTSS [virtual].

Meeker, S. (2021, September). *COVID-19, PTSD, and the Workplace*. Tufts CTSI's Team Science Summit, The COVID-19 Pandemic Impact on Health Care [virtual].

Meeker, S. (2022, June). *Pandemic Parenting: How Workplace Policies and Practices Alleviated PTSD Among Working Parents During the COVID-19 Crisis*. Work and Family Researchers Network Conference, New York, NY

Meeker, S., & **Molnar, B.E.** (October 2020). *Vicarious traumatization among child welfare professionals: A systematic review* [Conference presentation]. Annual Meeting of American Public Health Association (APHA), San Francisco, CA [virtual].

Meeker, S., & **Molnar, B.E.** (2021, November). *Vicarious trauma among emergency medical response professionals: A systematic review*. Annual Meeting of International Society on Traumatic Stress Studies (ISTSS) [virtual].

Molnar, B.E., Fraser, J. (2020). Child abuse workforce health: Research to promote a healthy and resilient child abuse & neglect workforce (Editorial introducing special issue). *Child Abuse & Neglect*, 110 (3) 104704. doi: 10.1016/j.chiabu.2020.104704

Molnar, B.E., Meeker, S., Manners, K., Tieszen, L., Kalergis, K., Fine, J.E., Hallinan, S., Wolfe, J., & Wells, M.K. (2020). Vicarious traumatization among child welfare and child protection professionals: A systematic review. *Child Abuse & Neglect*, 110(3), 104679. <https://doi.org/10.1016/j.chiabu.2020.104679>

Molnar, B.E., Scoglio, A.J., & Beardslee, W.R. (2021). Community-level prevention of childhood maltreatment: Next steps in a world with COVID-19. *International Journal of Child Maltreatment*, 3, 467-481. doi: <https://doi.org/10.1007/s42448-020-00064-4>

Molnar, B.E., Scoglio, A.A.J., & Beardslee, W.R. (2022). Community-level prevention of child maltreatment. *Handbook of Child Maltreatment*, Korbin J. Krugman R (eds.), Springer Scientific: Dordrecht Heidelberg New York London

Nakash, O., Cruz-Gonzalez, M., **Lincoln, A. K.**, Banerjee, S., Alegría, M. (2021). Similarities in Client-Clinician Perceptions of Subjective Social Status and its Association to Similarities in Quality of Working Alliance and Client Anxiety Symptoms. *Psychotherapy Research*

Nayak, S.S., Carpenito, T., Zamechek, L., Roper, K., Mendez-Penate, L., Arty, M., Moulin, C., **Mirand, D., & Molnar B.E.** (2022, January 19). Predictors of service utilization of young children and families enrolled in a pediatric primary care mental health promotion and prevention program. *Community Mental Health Journal*. PMID: 35043286.

Nayak, S., Molnar, B.E. (2020, October). *Improving equity and community-based services for infant and early childhood mental health in Massachusetts: A qualitative study* [Conference presentation]. Coming Together for Action conference of the Global Alliance for Behavioral Health and Social Justice [virtual].

Nayak, S.S., Scoglio, A.A.J., Mirand, D., Oates, A., Rabow, M., & Molnar, B.E. (in press). The impact of COVID-19 on young children, families, and the early childhood sector in Massachusetts: Challenges and adaptations. *Child Care in Practice*.

IHESJRS Affiliated Publications and Presentations 2020-2022

Nayak, S.S., Tobias, C., Wolfe, J., Roper, K., Méndez-Peñate, L, Moulin, C., Arty, M., **Scoglio, A.A.J.**, **Kelleher, A.**, Rue, J., Brigham, M., Bradshaw, T., Byars, N., Camacho, A., Douglas, S., & **Molnar, B.E.** (2021). Engaging and supporting young children and their families in early childhood mental health services: The role of the family partner. *Community Mental Health Journal*. doi: <https://doi.org/10.1007/s10597-021-00796-8>.

Ncube, C. N. (2021, January 5). *The role of wealth accumulation in Black-White preterm delivery disparities: a causal mediation analysis approach* [Presentation]. Department of Epidemiology Tuesday Talk, Boston University, Boston.

Ncube, C. N. (2021, May 18). *The role of wealth accumulation in Black-White preterm delivery disparities: A causal mediation analysis approach* [Webinar]. Society for Pediatric and Perinatal Epidemiologic Research (SPER).

Nekui, F., Galbraith, A.A., Briesacher, B.A., Zhang, F., Ross-Degnan, D., Gurwitz, J.H, Soumerai, S.B., & **Madden, J.M.** (2021, June). Cost conversations with providers among Medicare beneficiaries with cost-related nonadherence [Poster presentation]. AcademyHealth Annual Research [virtual].

Nekui, F., Soumerai, S.B., Galbraith, A.A., Briesacher, B.A., Zhang, F., Ross-Degnan, D., Gurwitz, J.H., & **Madden, J.M.** (2021). Cost-related medication nonadherence and its risk factors among Medicare beneficiaries. *Medical Care*, 59(1), 13-21. doi: [10.1097/MLR.0000000000001458](https://doi.org/10.1097/MLR.0000000000001458).

O’Leary, T., Stowell, E., **Hoffman, J.A.**, Paasche-Orlow, M., Bickmore, T., & Parker, A. (2021). *Examining the intersections of race, religion & community technologies: A photovoice study*. For the 2021 ACM Conference on Human Factors in Computing Systems (CHI’21).

Olawepo, J.O., Ezeanolue, E.E., Ekenna, A., et al. (2022). Building a national framework for multicenter research and clinical trials in Nigeria: Experience from the Nigeria Implementation Science Alliance. *BMJ Global Health*, 7, e008241.

Pabayo, R., Cook, D., Farmer, G., & **Molnar, B.E.** (2021). Neighborhood income inequality and alcohol use among adolescents in Boston, Massachusetts. *International Journal of Environmental Research and Public Health*, 18(16), 8484. PMID: 34444243.

Poghosyan, H., Fortin, D., Moen, E.L., Quigley, K.S., & Young G.J.. (2020, March 25-26). *Differences in uptake of low-dose CT scan for lung cancer among White and Black adult smokers in the United States-2017* [Presentation]. The 32nd Eastern Nursing Research Society Scientific Sessions [virtual].

Poghosyan, H., Fortin, D., Moen, E., Quigley, K.S., & Young, G.J. (2021). Differences in uptake of low-dose CT scan for lung cancer among White and Black adult smokers in the United States-2017. *J Health Care Poor Underserved*, 32 (1): 165-178. available at [10.1353/hpu.2021.0016](https://doi.org/10.1353/hpu.2021.0016).

Poghosyan, H., Mello, S., Robinson, K.N & Tan, A. (2021, March 25-26). *Worry about the future health issues of smoking and intention to s*

Poghosyan, H., Mello, S., Robinson, K.N., & Tan, A. (2020). Worry about the future health issues of smoking and intention to screen for lung cancer with low-dose computed tomography. *Cancer Nursing*. doi: [10.1097/NCC.0000000000000897](https://doi.org/10.1097/NCC.0000000000000897) *creen for lung cancer with low-dose computed tomography* [Presentation]. The 33rd Eastern Nursing Research Society Scientific Sessions [virtual].

Poghosyan, H., Noonan, E., Badri, P., Braun, I., & Young, G. (2021). Association between daily and non-daily cannabis use and depression among United States adult cancer survivors. *Nursing Outlook* [In Press] doi: [10.1016/j.outlook.2021.01.012](https://doi.org/10.1016/j.outlook.2021.01.012).

Poghosyan, H., Noonan, E., Badri, P., Braun, I., & Young, G. (2021, February 4-5). *Daily marijuana use associated with depression among U.S. adult cancer survivors symptom science advances in oncology nursing* [Poster presentation]. National Institute of Nursing Research [virtual].

Poghosyan, H., & Poghosyan, A. (2020). Marijuana use among cancer survivors: Quantifying prevalence and identifying predictors. *Addictive Behaviors*, 112, 106634. doi: [10.1016/j.addbeh.2020.106634](https://doi.org/10.1016/j.addbeh.2020.106634).

Poghosyan, H., & Poghosyan, A. (2020, September 17-18). *Marijuana use among cancer survivors: Quantifying prevalence and identifying predictors* [Poster presentation]. Council for the Advancement of Nursing Science. The 2020 State of the Science Congress on Nursing Research: The Environment’s Impact on Health. [virtual].

Reading, B., Taylor, M.A., & **Glowacki, E.M.** (2021). *Art, accountability, and advocacy: Applying a public memory framework to commemorations of health crises* [Presentation]. National Communication Association Convention, Rhetorical and Communication Theory Division, Seattle, WA.

Richards, K.C., Wang, Y.Y. Jun, J., & **Ye, L.** (2020). A systemic review of sleep measurement in critically ill patients. *Frontiers in Neurology*, 11(54), 25-29. doi: [10.3389/fneur.2020.542529](https://doi.org/10.3389/fneur.2020.542529)

Saksono, H., **Casteneda-Sceppa, C.**, **Hoffman, J.A.**, Seif El-Nasr, M., & Parker, A. (2021). *StoryMap: Using social modeling and self-modeling for supporting physical activity among low-SES families. For the 2021 ACM Conference on Human Factors in Computing Systems (CHI’21). Paper Won Honorable Mention.*

Salhi, C.,***Scoglio, A.J.**, Ellis, B.H., Issa, O., **Lincoln, AK.** (in-press). Impact of Post- resettlement Violence Exposure on the Mental

IHESJRS Affiliated Publications and Presentations 2020-2022

Health of Refugees: A Multi-Site Panel Survey of Somalis in the US and Canada. *Social Psychiatry and Psychiatric Epidemiology*.

Scannell, M., Rodgers, R.F., **Molnar, B.E.**, & Guthrie, B.J. (in press). Factors impacting HIV post-exposure prophylaxis among sexually assaulted patients presenting to two urban emergency departments. *Journal of Forensic Nursing*.

Schmidt, E.M., **Hoffman, J.A.**, Mule, C., & Briesch, A.M. (2021). Effects of a teacher training program to promote physically active play among children with Autism Spectrum Disorders. *Journal of School Psychology*, 85, 57-79. <https://doi.org/10.1016/j.jsp.2021.01.003>.

Schmidt, E.S., **Hoffman, J.A.**, Mule, C., & Briesch, A. M. (in press). Adapting a Preschool Physical Activity Intervention to Be Inclusive of Children on the Autism Spectrum. *International Journal of Disability, Development and Education*.

Scoglio, A.A.J., Kraus, S.K., Griffith, J., **Lincoln, A.K.**, & **Molnar, B.E.** (2020, October). *Social support over time for men and women veterans with and without complex trauma histories* [Cnference presentation]. Annual Meeting of American Public Health Association (APHA), San Francisco, CA [virtual].

Scoglio, A.A.J., **Lincoln, A.K.**, Kraus, S.W., & **Molnar, B.E.** (2020). Chipped or whole? Listening to survivors’ experiences with disclosure following sexual violence. *Journal of Interpersonal Violence*. doi: [10.1177/0886260520967745](https://doi.org/10.1177/0886260520967745) **Scoglio, A.A.J.**, **Lincoln, A.K.**, Kraus, S.W., & **Molnar, B.E.** (2021, October). *Listening to survivors’ experiences with disclosure following sexual violence. Annual Meeting of the American Public Health Association (APHA)*, Denver, CO [virtual].

Scoglio, A.A.J., Marine, S.B., **Molnar, B.E.** (2020) Responder perspectives on justice and healing for sexual violence survivors. *Psychology of Violence*, 11(1), 1–10. <https://doi.org/10.1037/vio0000344>

Scoglio, A.A.J., & **Molnar, B.E.** (2021, November). *What Role Does Justice Play in Healing? Qualitative Findings from Sexual Violence Survivor Focus Groups*. Poster Presented at ISTSS Annual Conference (ISTSS) [virtual].

Scoglio, A.A.J., & **Molnar, B.E.** (2021, October). *What role does justice play in healing? Qualitative findings from sexual assault survivor focus groups*. Annual Meeting of the American Public Health Association (APHA), Denver, CO [virtual].

Scoglio, A.A.J., **Molnar, B.E.**, **Lincoln, A.L.**, Griffith, J., & Kraus, S.W. (2021, November). *An Examination of Revictimization in Men and Women US Military Veterans with Child Maltreatment Histories*. Paper Presented at ISTSS Annual Conference (ISTSS) [virtual].

Scoglio, A.A.J., **Molnar, B.E.**, **Lincoln, A.K.**, Griffith, J., Park, C.L., & Kraus, S.W. (2022, March 2). Sexual and physical revictimization in US Military veterans. *Journal of Traumatic Stress*, Advance online publication.

Scoglio, A.A.J., **Molnar, B.E.**, **Lincoln, A.K.**, Griffith, J., Park, C.L., & Kraus, S.W. (2022, February 24). Social support over time for men and women veterans with and without complex trauma histories. *Psychological Services*. PMID 35201813

Snyder-Young, D. (2020, July). *Artists in Recovery: Theatre participation and substance addiction recovery processes* [Presentation]. Association of Theatre in Higher Education [virtual]

Snyder-Young, D. (2021, August). *Association of Theatre in Higher Education. Recovery capital and theatre participation and substance addiction recovery processes*. Paper [virtual].

Snyder-Young, D., **Houston, A.**, Moyer Bell, A.B., Short, A., & **Lincoln, A.** (2021). Recovery Capital and Collaborative Theatre Making: How actors in recovery from substance addiction value their participation in addiction prevention plays. Research in Drama Education: *The Journal of Applied Theatre and Performance*. <https://doi.org/10.1080/13569783.2021.1949973>.

Taylor, M.A., & **Glowacki, E.M.** (2022). Art Advocacy: Applying a Public Memory Rhetorical Framework to Health Crisis Communication. *Health Communication*, Advance online publication, 1-5. <https://doi.org/10.1080/10410236.2022.2071391>.

Thomson, S.; Galletly, C., **Prener, C.**, **Garverich, S.**, Liu, D., & **Lincoln, A.** (2022) Associations between health literacy, cognitive function and general literacy in people with schizophrenia attending community mental health clinics in Australia. *BMC Psychiatry*, 22(1):245. doi: [10.1186/s12888-022-03901-7](https://doi.org/10.1186/s12888-022-03901-7).

Tovar, A., Miller, M.E., **Hoffman, J.A.**, Guseman, E.H., Sisson, S.B., Shefet, D., Dooyema, C., Benjamin-Neelon, S., Hall, K., Swindle, T.M., Beltran, M., & Stage, V.C. (2021). BMI Data Collection and Communication Practices in a Multi-State Sample of Head Start Programs. *Childhood Obesity*. [10.1089/chi.2021.0199](https://doi.org/10.1089/chi.2021.0199).

Wharam, J.F., Wallace, J., LeCates, R., **Madden, J.M.**, Zhang, F., Ross-Degnan, D., & Lu, C.Y. (2021). Out-of-pocket spending inequity among high-deductible health plan members with bipolar disorder. *Journal of General Internal Medicine*, 1-3. doi: [10.1007/s11606-021-06773-x](https://doi.org/10.1007/s11606-021-06773-x)

Wong, J., **Li, C.** & NASP Bilingual Interest Group Leadership Team (2021, May 14). *Strategies and Resources to support linguistically diverse populations in the fight against racial discrimination and hate crimes*. [Presentation]. NASP Bilingual Interest Group Meetup
Wu, T.T., Devlin, J.W., Zegers, M., Kooker, R., Griffith, J.L., **Molnar, B.E.**, & van den Boogaard, M. (2021). Social determinants of health and delirium occurrence and duration in critically ill adults. *Critical Care Explorations*, 3(9), e0532.

IHESJRS Affiliated Publications and Presentations 2020-2022

- Ye, L.** (2021, September 29). *Promoting Health through Better Sleep and Better Management of Sleep Disorders*. Boston College Grand Round
- Ye, L.** (2022, January 27). *Engaging Partners to Promote Adherence to CPAP Treatment*. Invited speaker for Sleep and Circadian Grand Rounds, University of Pittsburgh Center for Sleep and Circadian Science [virtual].
- Ye, L.** (2022, April 28). *Engaging Partners to Promote Adherence to CPAP Treatment*. Research Cameo at Northeastern SON FOM.
- Ye, L.** (2022, May 11). *Building a Program of Research and Leading Interdisciplinary Inquiries*. Invited speaker for Biotechnology, Health, and Innovation Research Center, Hungkuang University, Taiwan [virtual].
- Ye, L.** (2022, June 7). *Promoting Health through Better Sleep and Better Management of Sleep Disorders*. Guest Presenter for Social Work Grand Rounds, Columbia VA Health Care System [virtual]
- Ye, L., & Dykes, P.C.** (2021) Individualized sleep promotion in acute care hospitals: Managing specific factors that affect patient sleep. *Mhealth*, 7(25). doi: 10.21037/mhealth-20-31
- Ye, L., Li, W., & Willis, D.G.** (2022). Facilitators and Barriers to Getting Obstructive Sleep Apnea Diagnosed: Perspectives from Patients and Their Partners. *Journal of Clinical Sleep Medicine*, 18(3), 835-841. doi: 10.5664/jcsm.9738.
- Ye, L., Miller, A.H., Bruner, D.W., Paul, S., Felger, J.C., Wommack, E.C., Higgins, K.A., Shin, D.M., Saba, N.F., & Xiao, C.** (2022, June 4-8). *Sleep Quality and Its Association with Inflammation Over Time in Patients Undergoing Radiation Therapy for Head and Neck Cancer*. SLEEP 2022, the 36th Annual Meeting of the Associated Professional Sleep Societies, LLC (APSS), Charlotte, North Carolina.
- Yun, H.S., Zhou, S., Kimani, E., Olafsson, S., O'Leary, T.K., Parmar, D., **Hoffman, J.A.**, Intille, S., Paasche-Orlow, M., & Bickmore, T. (2022). *Techno-spiritual engagement: Mechanisms for improving uptake of mHealth apps designed for church members*. In Joint Proceedings of the ACM IUI 2022 Workshops. Helsinki, Finland.
- Zamechek, L., Nayak, S., Molnar, B.E.** (2020, October). *Predictors of service utilization of families enrolled in a community-based pediatric mental health program* [Conference presentation]. Annual Meeting of American Public Health Association (APHA), San Francisco, CA [virtual].