

Laboratory for Locomotion Research

Director: Sheng-Che Yen, PT, PhD

The goals of Laboratory for Locomotion Research are to: (a) understand how the central nervous system achieves sensorimotor control during gait; (b) develop and test gait rehabilitation programs for patients with sensorimotor control problems. The lab space is currently under construction and will be fully functional by April 1st, 2013. The lab is located in the 4th floor of the university's Richards Hall and has a total space of 600 ft². A separate office (150 ft²) is adjacent to the lab that will be served as an examination room for healthy and patient subjects. The lab will be equipped with state of the art equipment and software for gait analysis. These include:

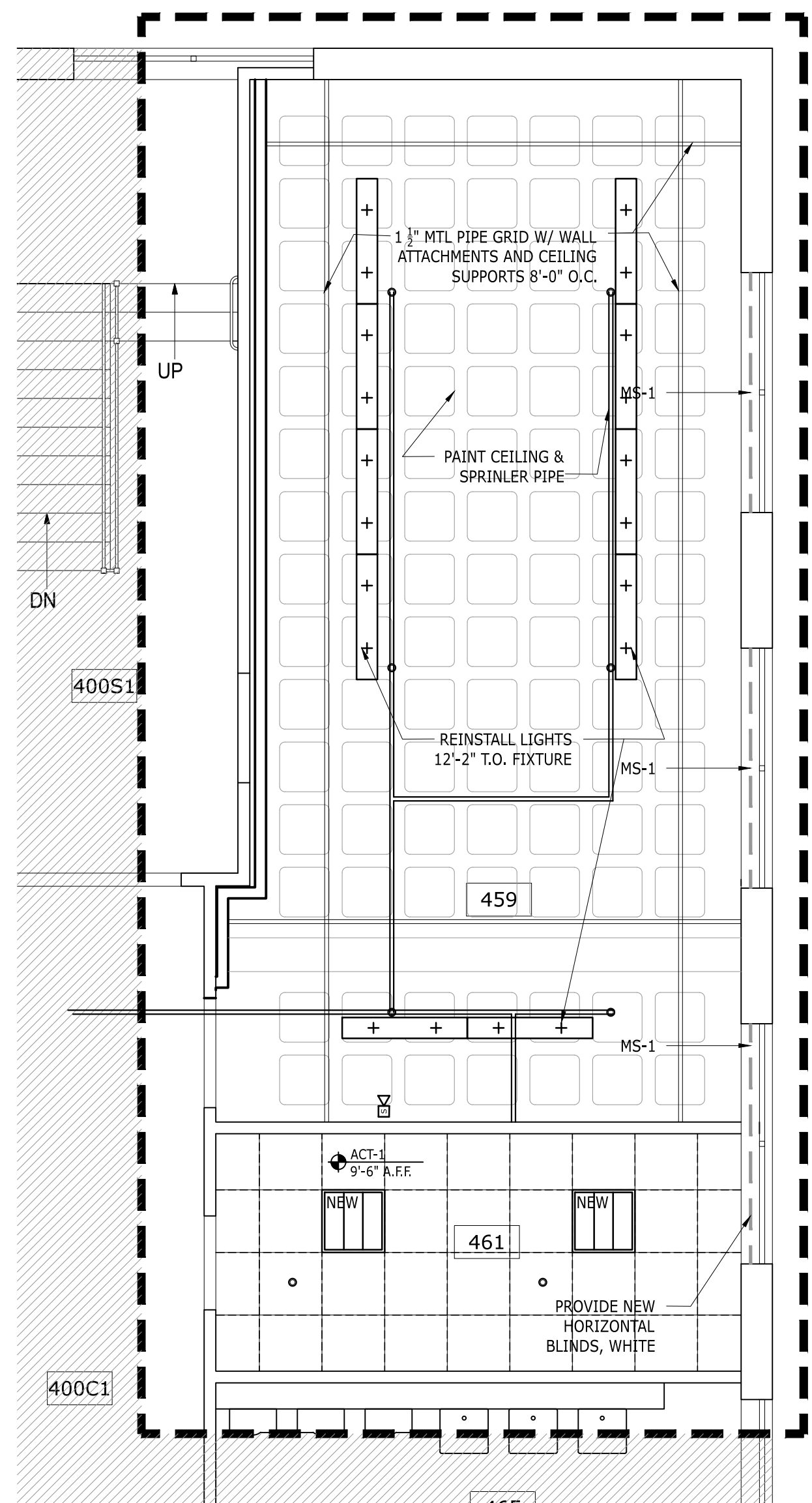
- (a) 3D motion analysis system (Qualisys, Gothenburg, Sweden) with 6 cameras
- (b) Biodex RTM 600 treadmill
- (c) Biodex weight lifting system
- (d) 8 channel EMG system (Delsys, MA)
- (e) Foot switch system (Delsys, MA)
- (f) Electrogoniometer (Biometrics, VA)
- (g) 16-channel data acquisition board (National Instruments, TX)
- (h) LabView
- (i) Visual 3D biomechanical analysis and modeling software.

GRAPHIC KEY

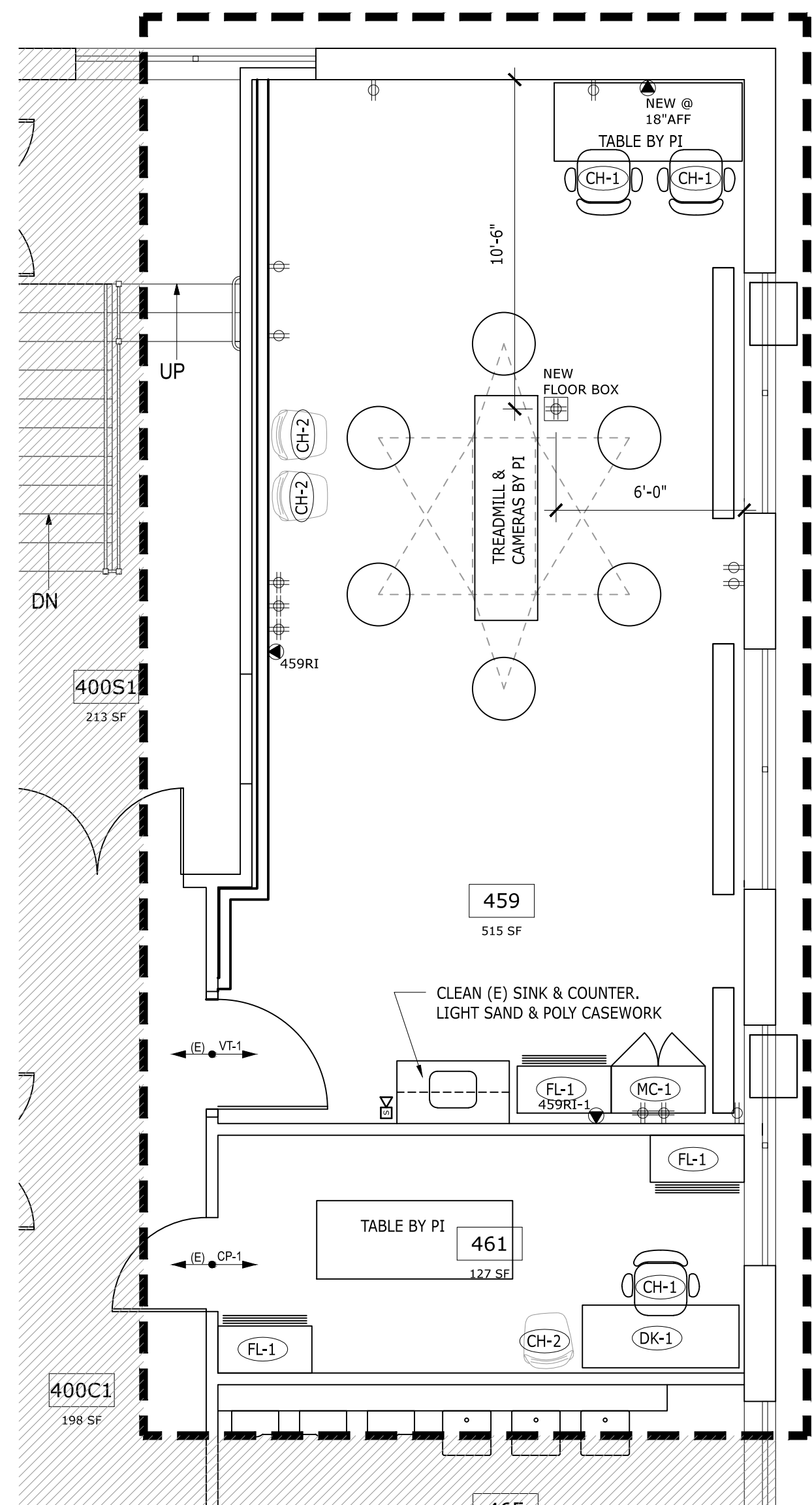
	EXISTING WALL TO REMAIN		2'-0" X 2'-0" RECESSED HIGH EFFICIENCY FLUORESCENT FIXTURE
	NEW WALL		2'-0" X 2'-0" RECESSED FLUORESCENT FIXTURE WITH LENS
	WALL TO BE DEMOLISHED		2'-0" X 2'-0" RECESSED EGGCRATE FLUORESCENT FIXTURE WITH RETURN LOUVER
	SWITCH		LINEAR PENDANT
	NUNEQ QUAD WITH IDENTIFICATION		PENDANT FIXTURE
	DUPLEX RECEPTACLE		RECESSED DOWN LIGHT
	THERMOSTAT		RECESSED WALL WASHER
	SWITCH TO BE DEMOLISHED		WALL SCONCE
	NUNEQ QUAD TO BE DEMOLISHED		UNDER CABINET STRIP LIGHT
	DUPLEX RECEPTACLE TO BE DEMOLISHED		SPEAKER
	THERMOSTAT TO BE DEMOLISHED		FIRE SPRINKLER HEAD
	DOOR TAG		FIRE SPRINKLER HEAD TO BE DEMOLISHED
	ELEVATION TAG		FIRE STROBE
	FURNITURE TAG		EXIT SIGN
	CEILING TAG		SUPPLY AIR GRILLE
	WALL TAG		RETURN AIR GRILLE
	EXISTING		CEILING MOUNTED PROJECTOR
			RECESSED PROJECTOR SCREEN

Sheng-Che Yen, PT, PhD
 Laboratory for Locomotion Research
 Richards Hall Suites 459 and 461

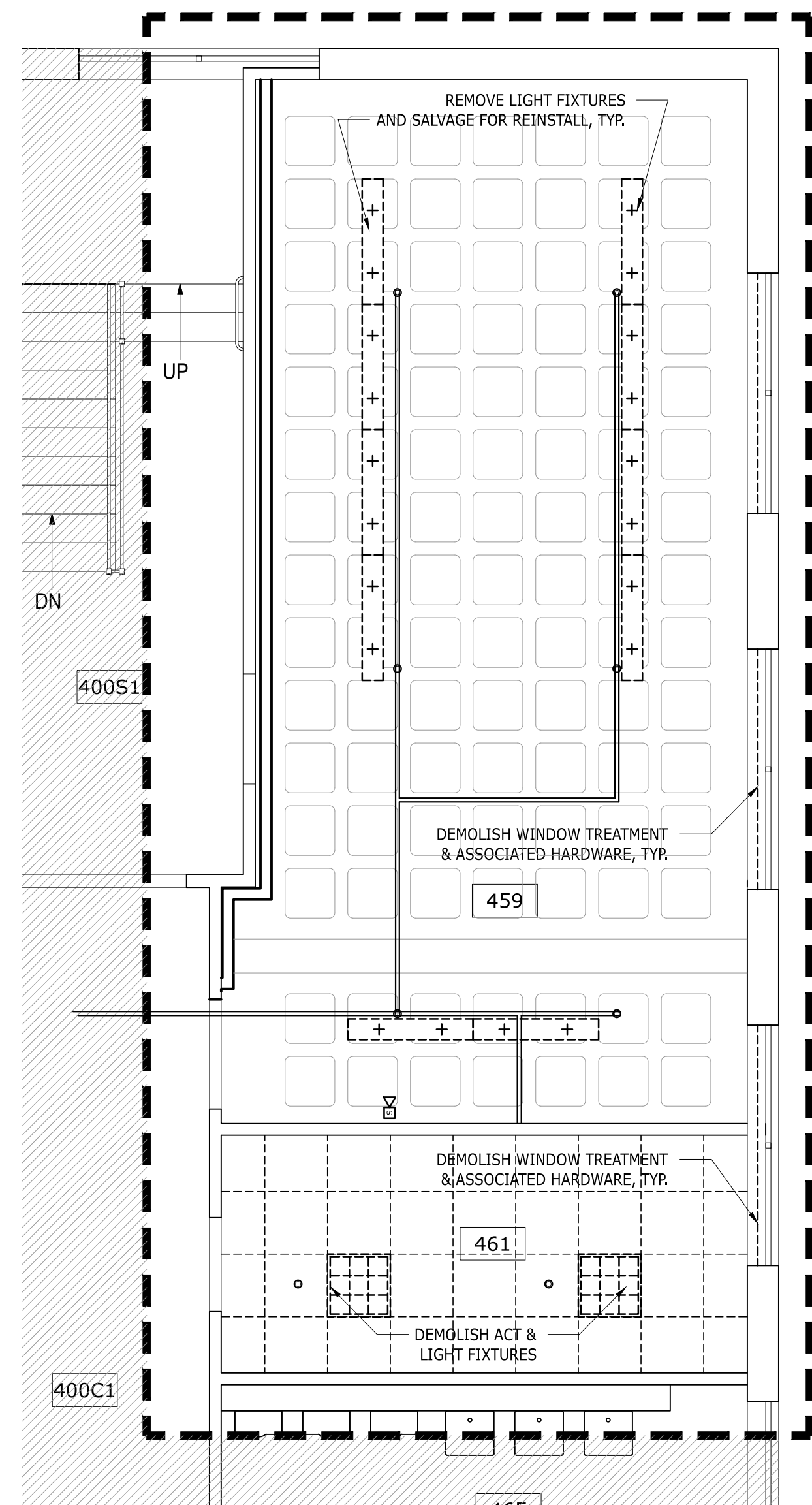
Northeastern
 SPACE PLANNING & DESIGN - FACILITIES DIVISION
 288 ST. BOTOLPH STREET - BOSTON MA 02115
 T: 617.373.5263 - F: 617.373.2265



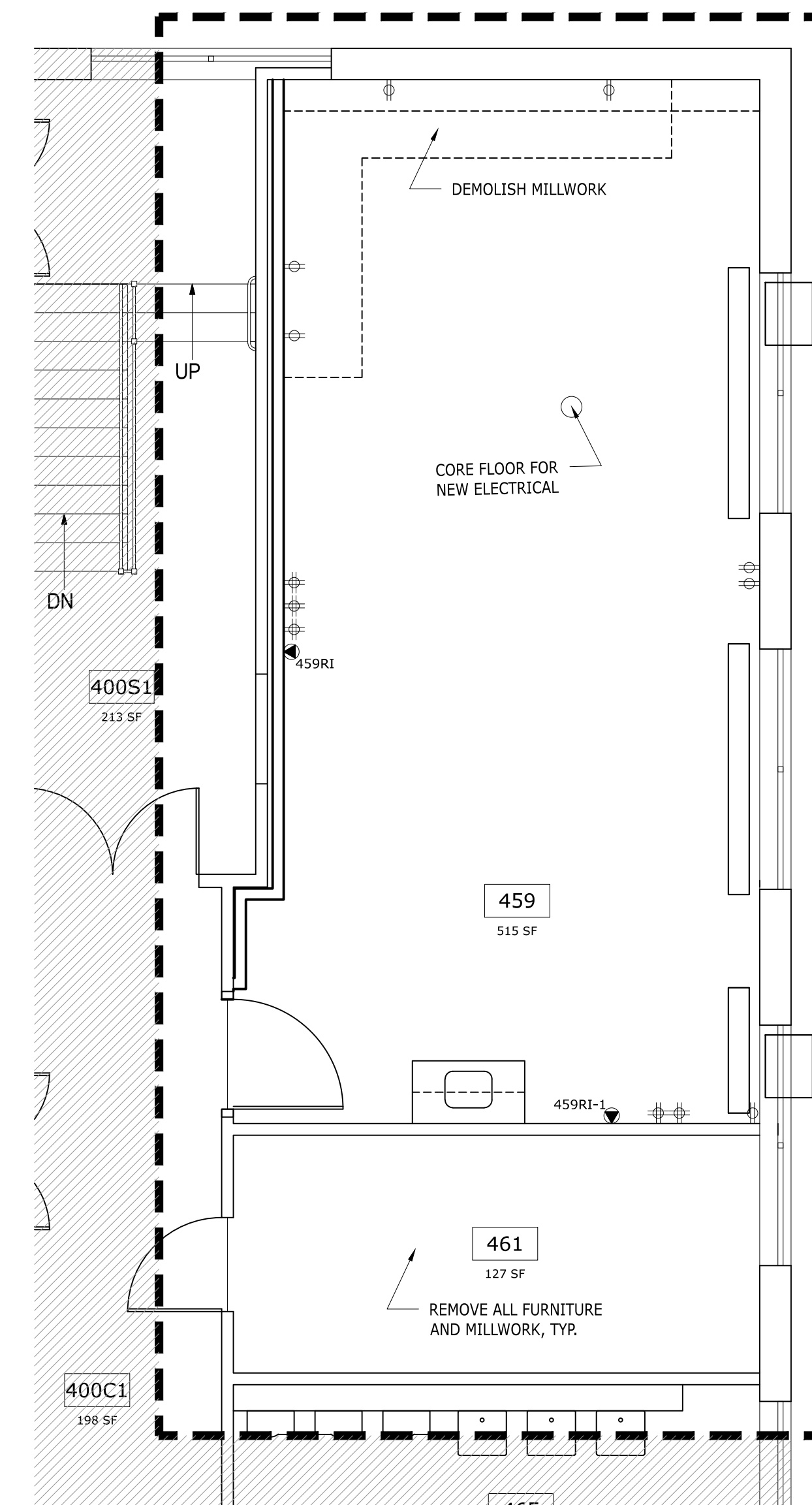
4 REFLECTED CEILING PLAN
 1/4" = 1'-0"



3 FLOOR PLAN
 1/4" = 1'-0"



2 DEMOLITION RCP
 1/4" = 1'-0"



1 DEMOLITION PLAN
 1/4" = 1'-0"